

serene

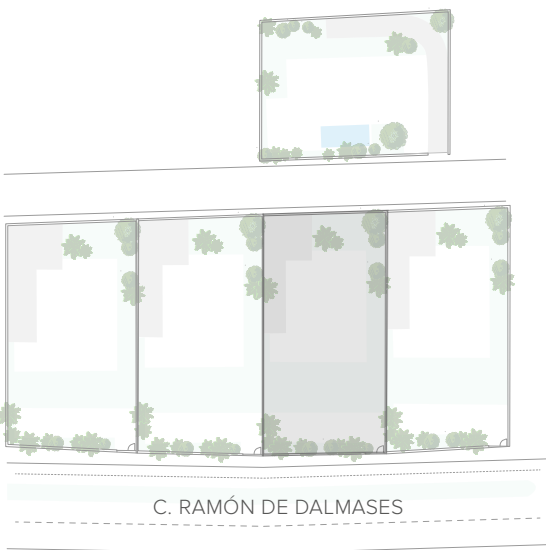
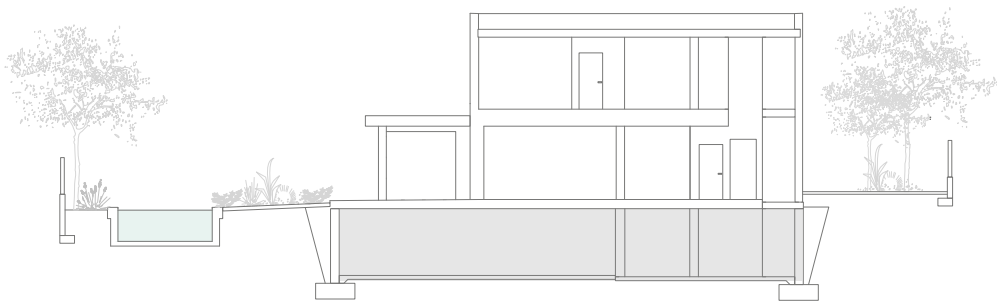
COLLECTION

*by Cardoner Group*

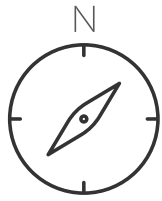
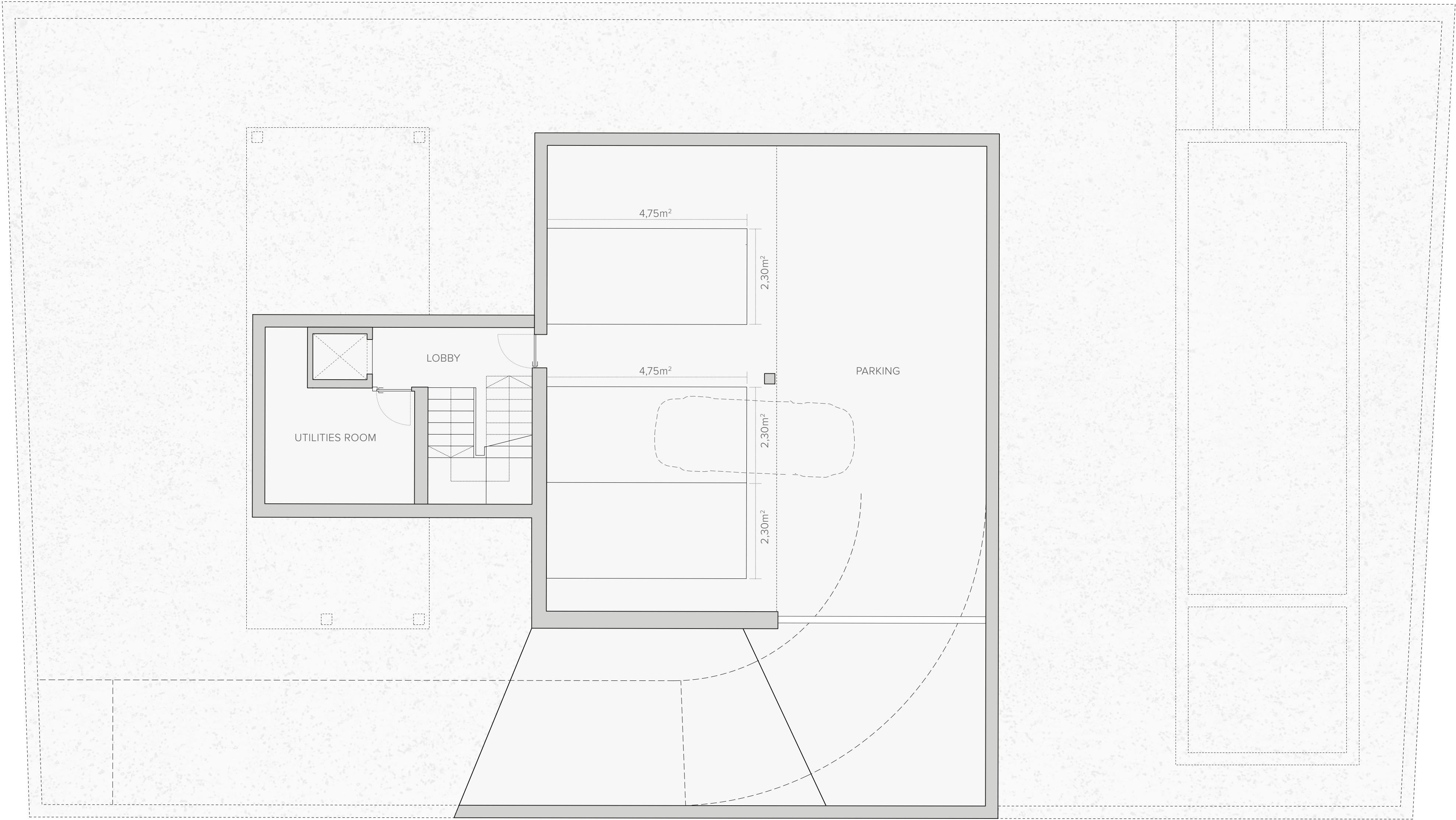
# villa migdía

## BASEMENT

<b>Built area</b>	<b>192 m²</b>
<b>Usable area</b>	<b>136 m²</b>
Parking	120 m²
Entrance lobby	6 m²
Utilities room	10 m²



C. RAMÓN DE DALMASES



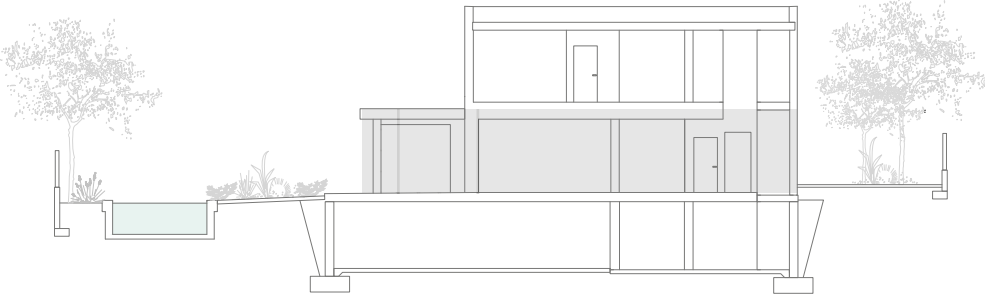
The floor plans included in this document are non-contractual and non-binding, serving solely for illustrative and informational purposes. These plans do not necessarily reflect the final architecture or interior design, as they are based on an initial project that may be subject to modifications in the technical designs for technical or legal reasons.



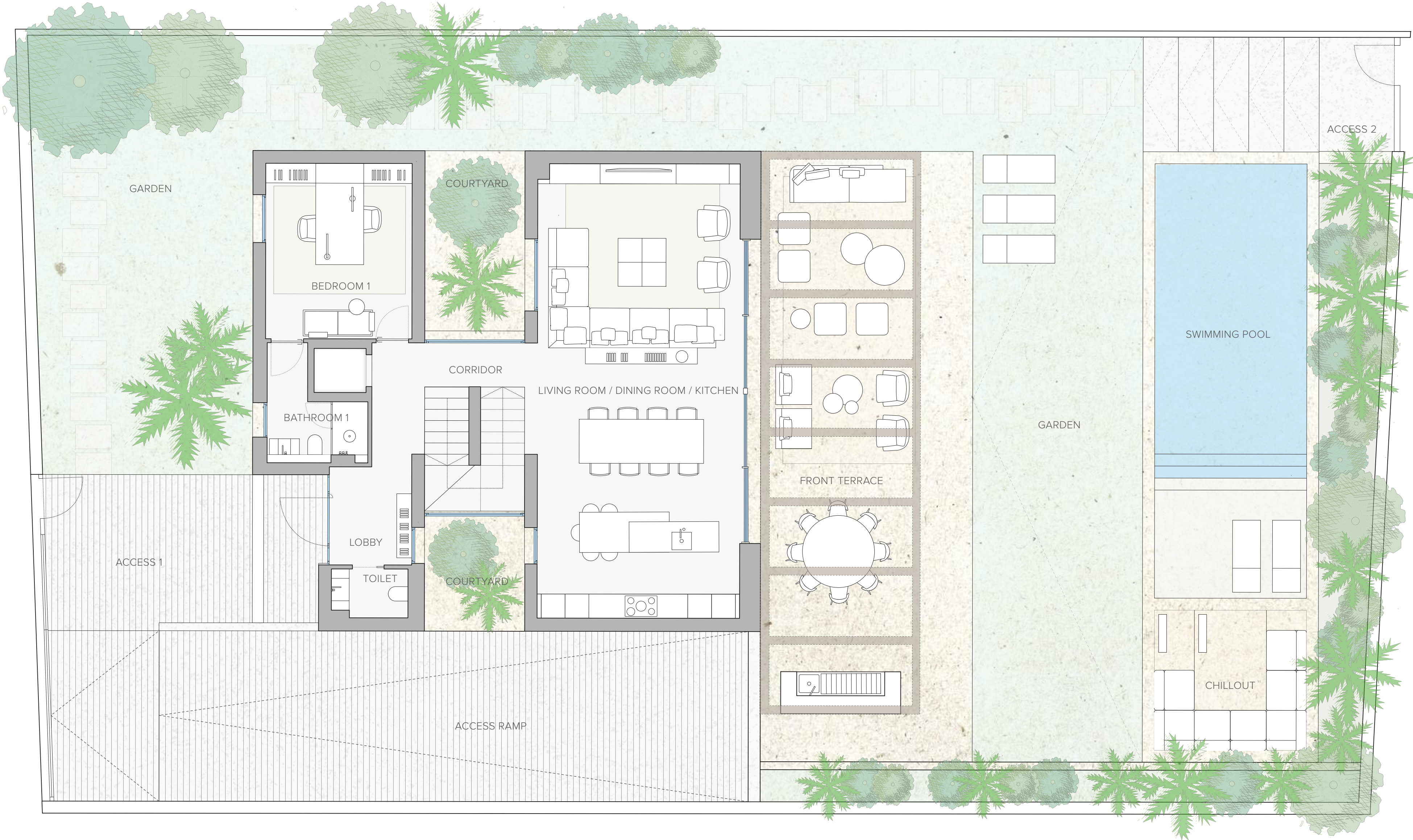
# villa migdía

## GROUND FLOOR

<b>Built area</b>	<b>128 m<sup>2</sup></b>
<b>Usable area</b>	<b>96 m<sup>2</sup></b>
Entrance lobby + corridor	12 m <sup>2</sup>
Living room / dining room / kitchen	60 m <sup>2</sup>
Bedroom 1	11 m <sup>2</sup>
Bathroom 1	6 m <sup>2</sup>
Guest toilet	3 m <sup>2</sup>
<b>Outdoor area</b>	<b>479 m<sup>2</sup></b>
Garden	229 m <sup>2</sup>
Front terrace	79 m <sup>2</sup>
Courtyard	17 m <sup>2</sup>
Outdoor lounge	15 m <sup>2</sup>
Swimming pool	44 m <sup>2</sup>



C. RAMÓN DE DALMASES

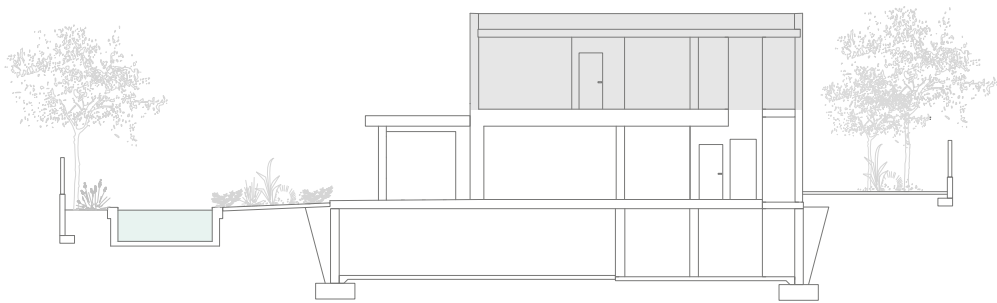




# villa migdía

## FIRST FLOOR

Superficie construidas	135 m <sup>2</sup>
Usable area	100 m <sup>2</sup>
Bedroom 2	17 m <sup>2</sup>
Bathroom 2	9 m <sup>2</sup>
Bedroom 3	17 m <sup>2</sup>
Bathroom 3	5 m <sup>2</sup>
Bedroom 4	16 m <sup>2</sup>
Bedroom 5	15 m <sup>2</sup>
Bathroom 4	5 m <sup>2</sup>
Corridor	8 m <sup>2</sup>



C. RAMÓN DE DALMASES

