

serene

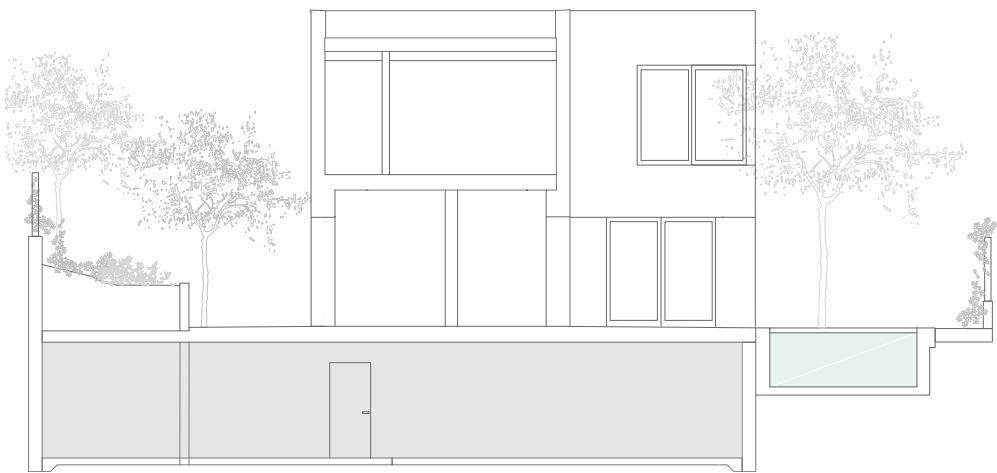
COLLECTION

by Cardoner Group

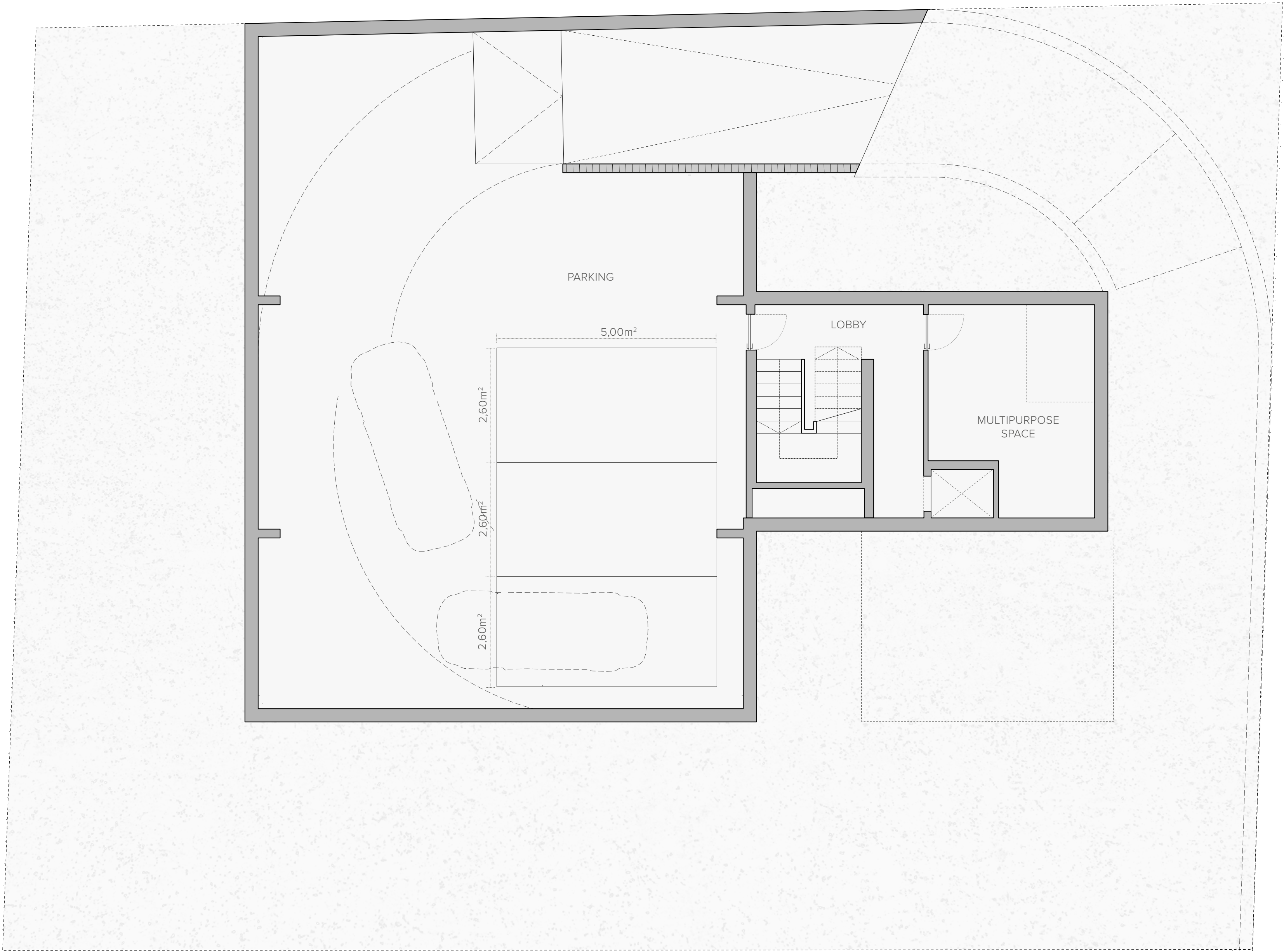
villa llúcia

BASEMENT

Built area	210 m²
Usable area	175 m²
Parking	149 m ²
Entrance lobby	10 m ²
Multipurpose space	16 m ²



C. RAMÓN DE DALMASES



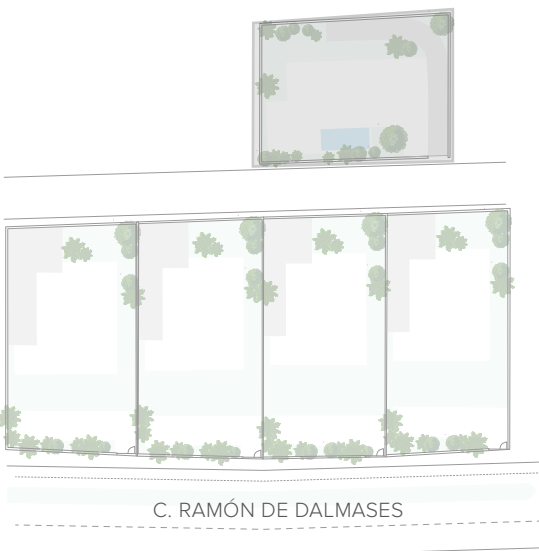
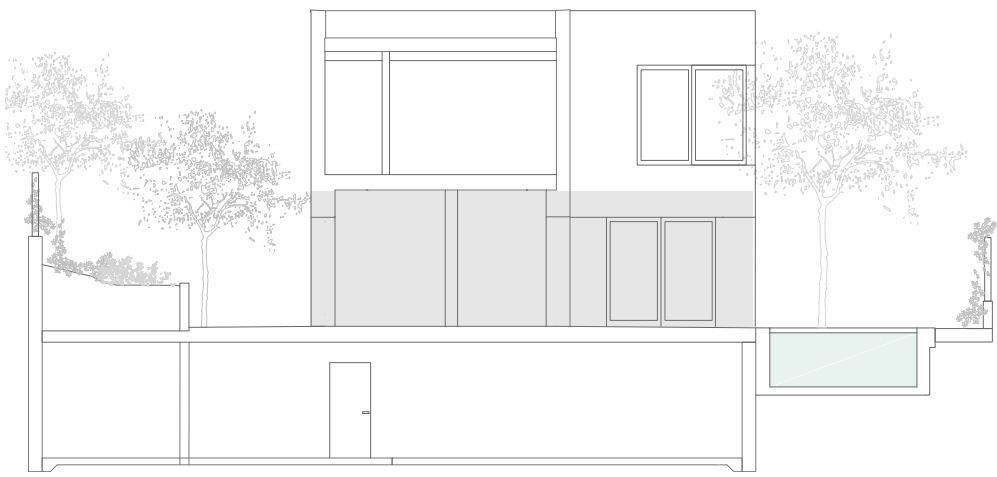
The floor plans included in this document are non-contractual and non-binding, serving solely for illustrative and informational purposes. These plans do not necessarily reflect the final architecture or interior design, as they are based on an initial project that may be subject to modifications in the technical designs for technical or legal reasons.



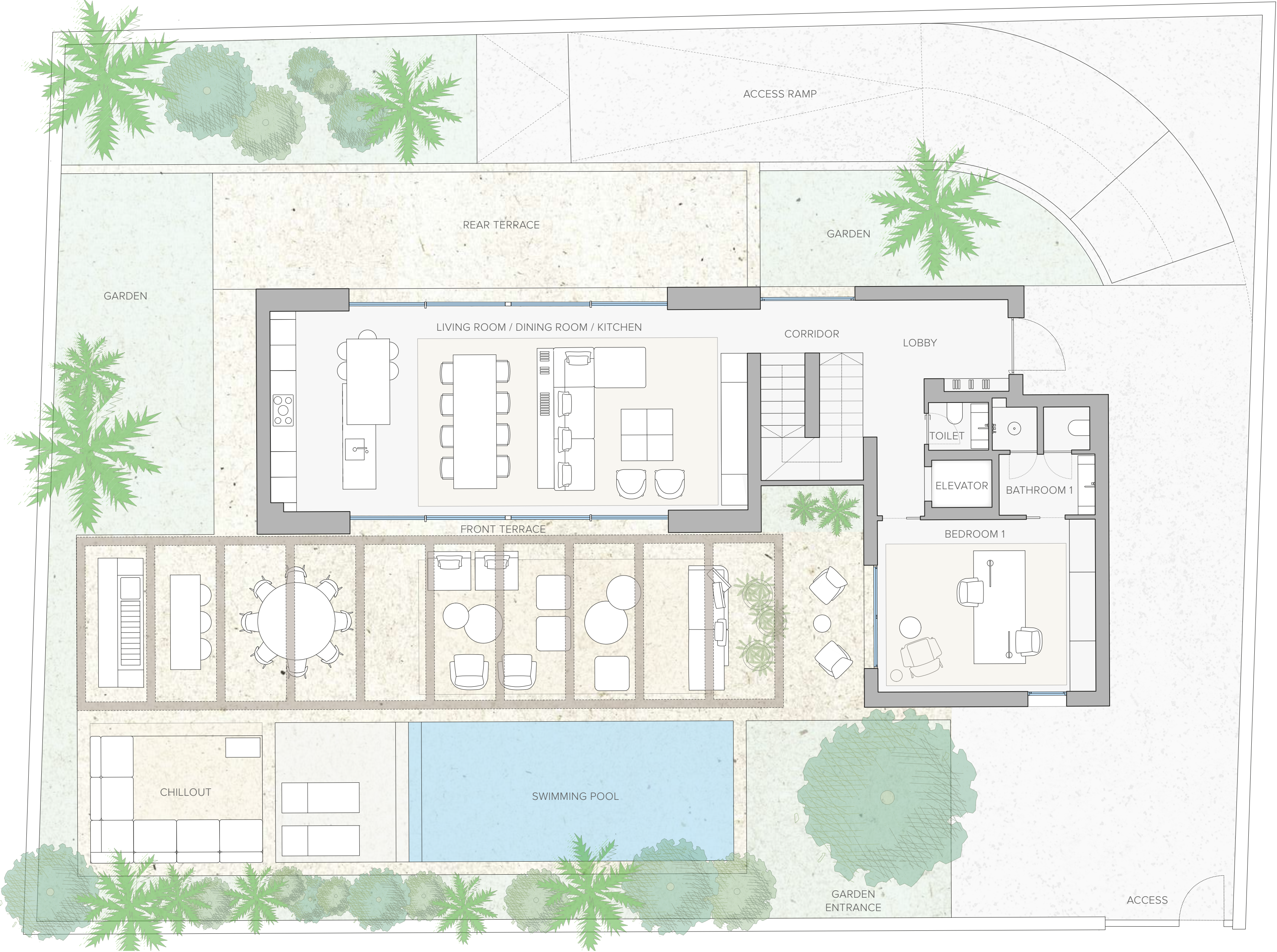
villa llúcia

GROUND FLOOR

Built area	129 m²
Usable area	99 m²
Entrance lobby + corridor	14 m ²
Living room / dining room / kitchen	57 m ²
Bedroom 1	20 m ²
Bathroom 1	8 m ²
Guest toilet	2 m ²
Outdoor area	425 m²
Garden	144 m ²
Front terrace	75 m ²
Rear terrace	34 m ²
Outdoor lounge	13 m ²
Swimming pool	35 m ²



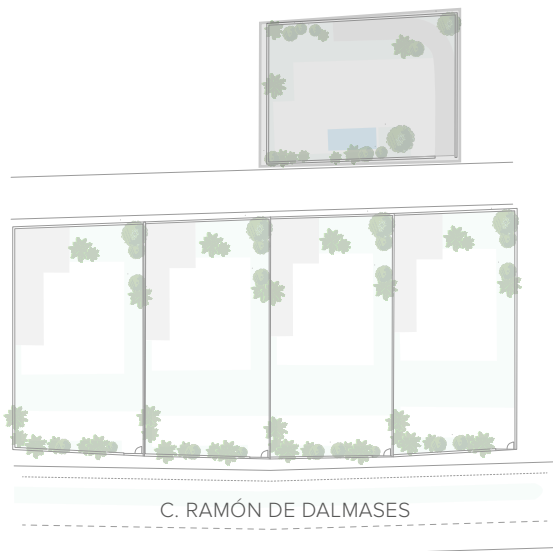
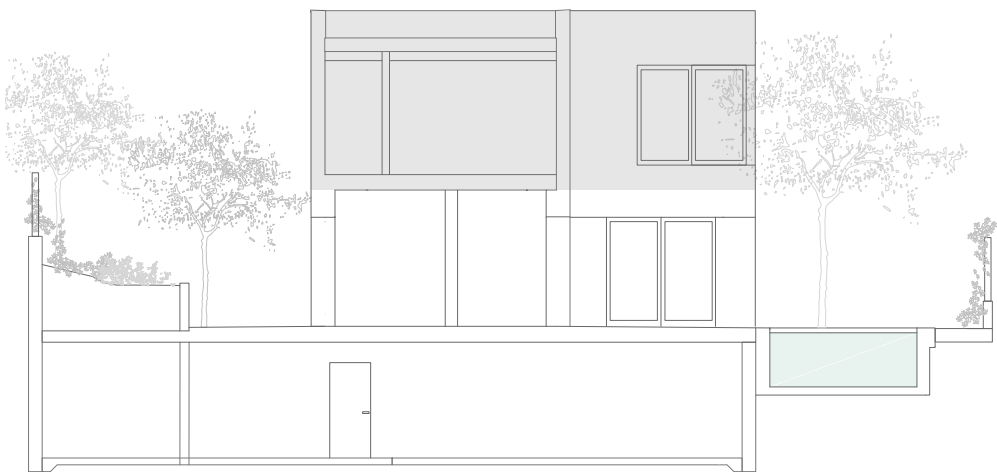
C. RAMÓN DE DALMASES



villa llúcia

FIRST FLOOR

Built area	113 m²
Usable area	81 m²
Bedroom 2	18 m ²
Bathroom 2	9 m ²
Bedroom 3	12 m ²
Bathroom 3	6 m
Bedroom 4	16 m ²
Corridor	19 m ²



C. RAMÓN DE DALMASES

