

serene

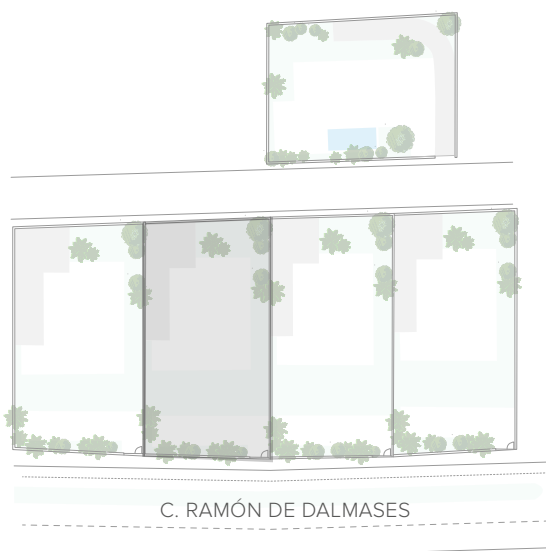
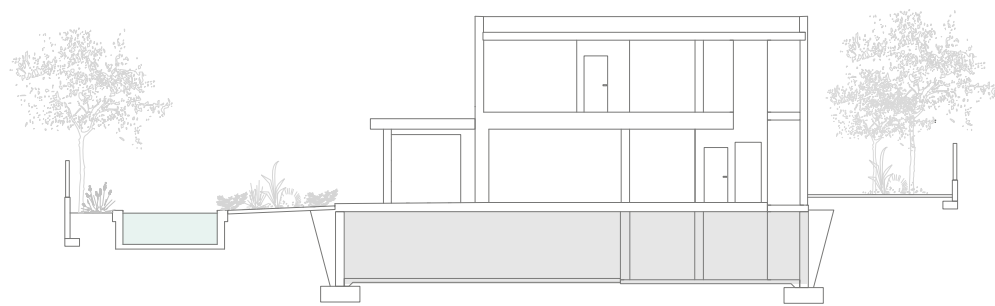
COLLECTION

by Cardoner Group

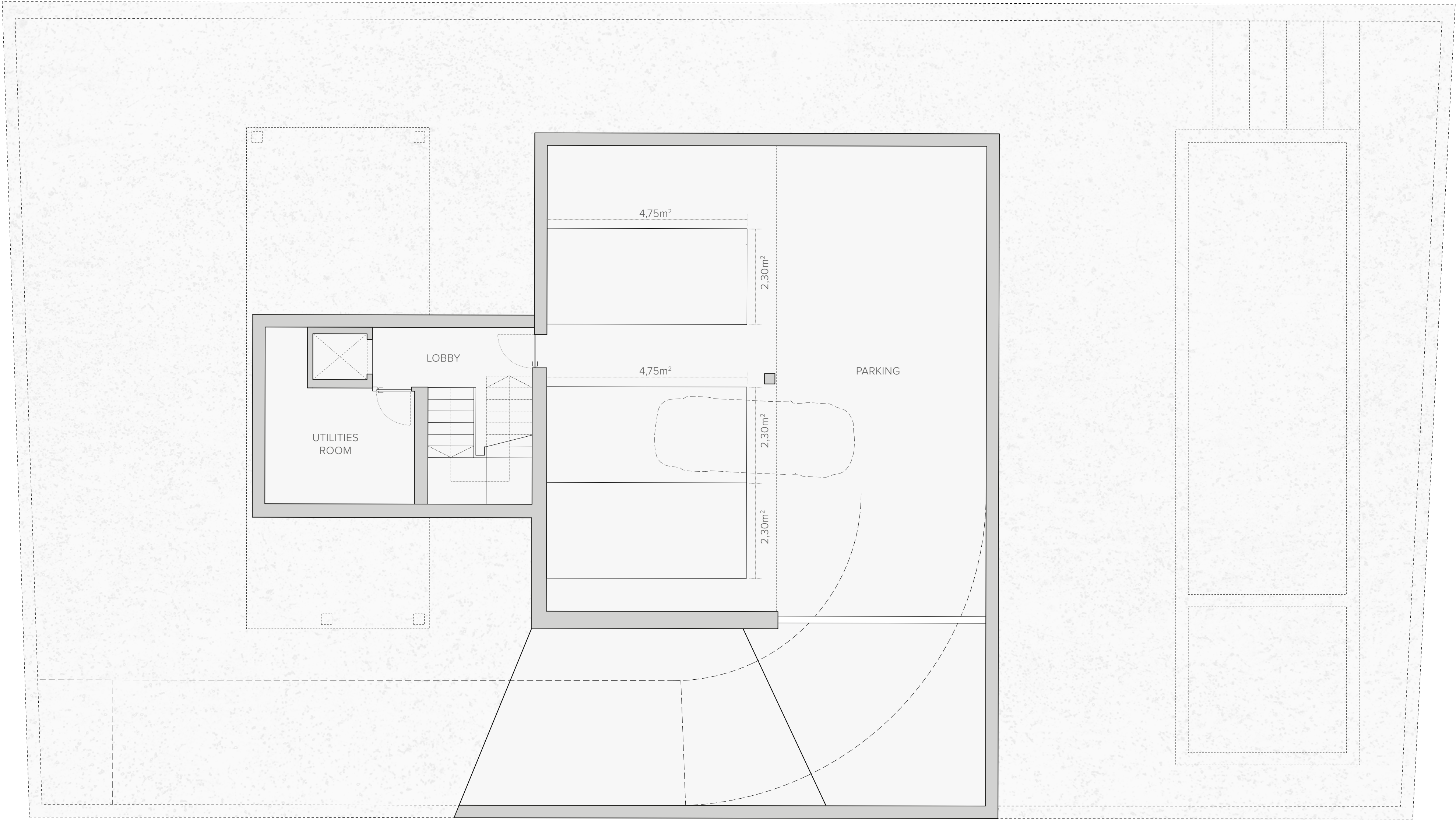
villa claror

BASEMENT

Built area	192 m²
Usable area	136 m²
Parking	120 m ²
Entrance lobby	6 m ²
Utilities room	10 m ²



C. RAMÓN DE DALMASES

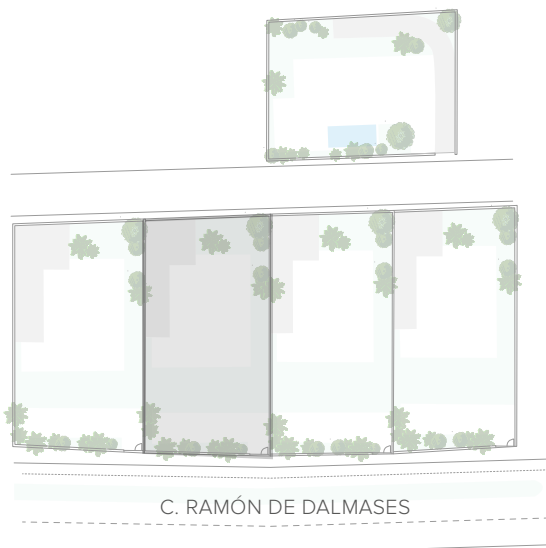
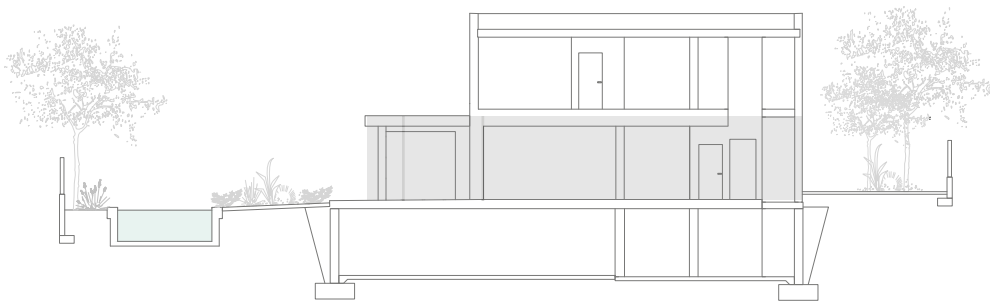


The floor plans included in this document are non-contractual and non-binding, serving solely for illustrative and informational purposes. These plans do not necessarily reflect the final architecture or interior design, as they are based on an initial project that may be subject to modifications in the technical designs for technical or legal reasons.

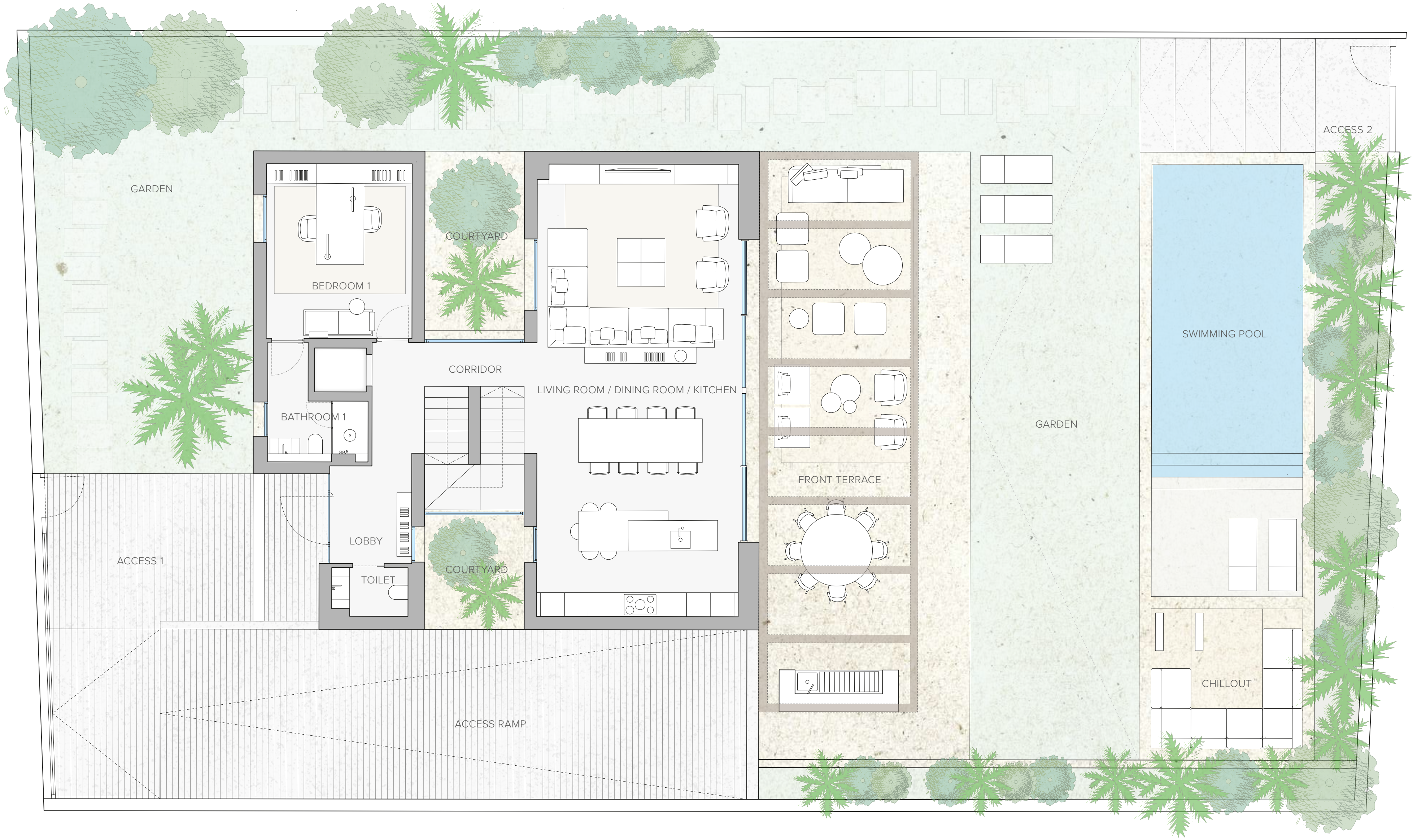
villa claror

GROUND FLOOR

Built area	128 m²
Usable area	96 m²
Entrance lobby + corridor	12 m ²
Living room / dining room / kitchen	60 m ²
Bedroom 1	11 m ²
Bathroom 1	6 m ²
Guest toilet	3 m ²
Outdoor area	479 m²
Garden	229 m ²
Front terrace	79 m ²
Courtyard	17 m ²
Outdoor lounge	15 m ²
Swimming pool	44 m ²



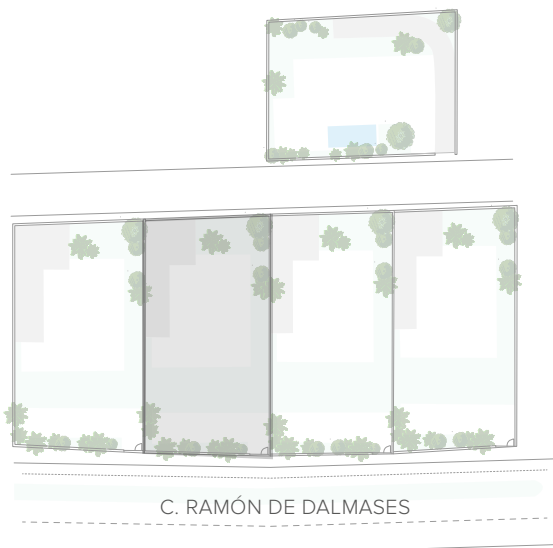
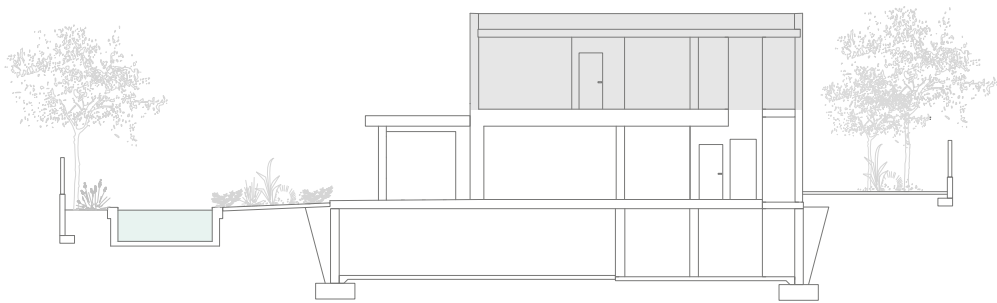
C. RAMÓN DE DALMASES



villa claror

FISRT FLOOR

Built area	135 m²
Usable area	100 m²
Bedroom 2	17 m ²
Bathroom 2	9 m ²
Bedroom 3	17 m ²
Bathroom 3	5 m ²
Bedroom 4	16 m ²
Bedroom 5	15 m ²
Bathroom 4	5 m ²
Corridor	8 m ²



C. RAMÓN DE DALMASES

