

serene

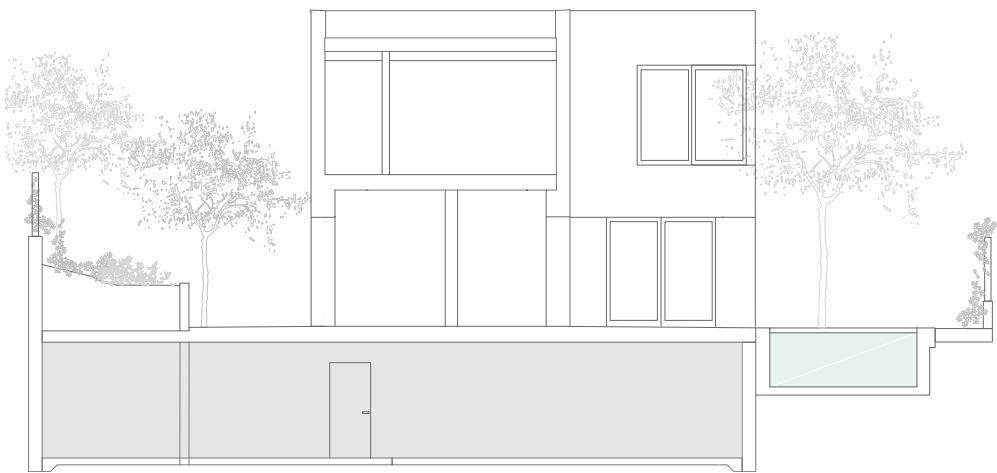
COLLECTION

*by Cardoner Group*

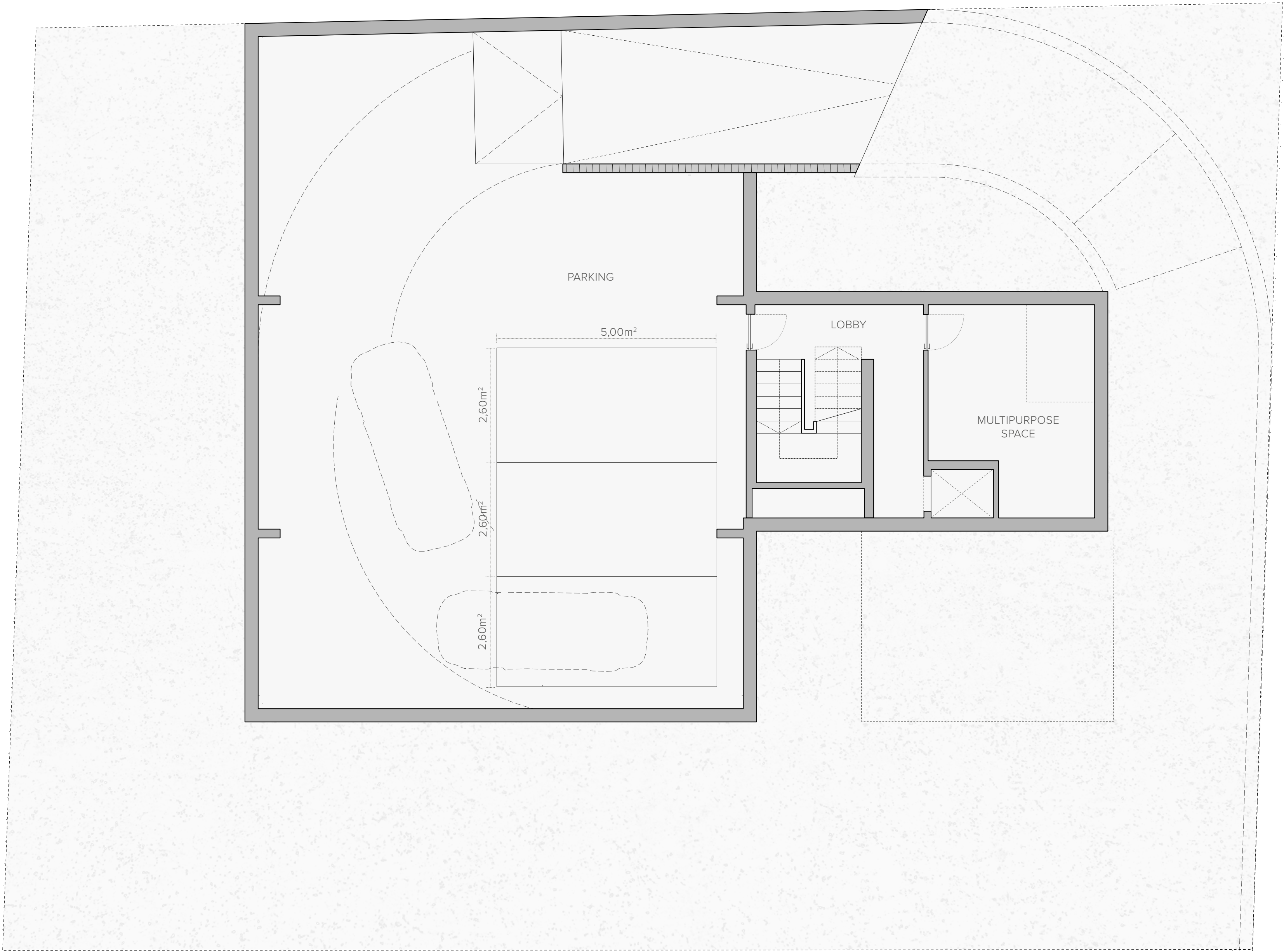
# villa llúcia

## BASEMENT

<b>Built area</b>	<b>210 m<sup>2</sup></b>
<b>Usable area</b>	<b>175 m<sup>2</sup></b>
Parking	149 m <sup>2</sup>
Entrance lobby	10 m <sup>2</sup>
Multipurpose space	16 m <sup>2</sup>



C. RAMÓN DE DALMASES



The floor plans included in this document are non-contractual and non-binding, serving solely for illustrative and informational purposes. These plans do not necessarily reflect the final architecture or interior design, as they are based on an initial project that may be subject to modifications in the technical designs for technical or legal reasons.





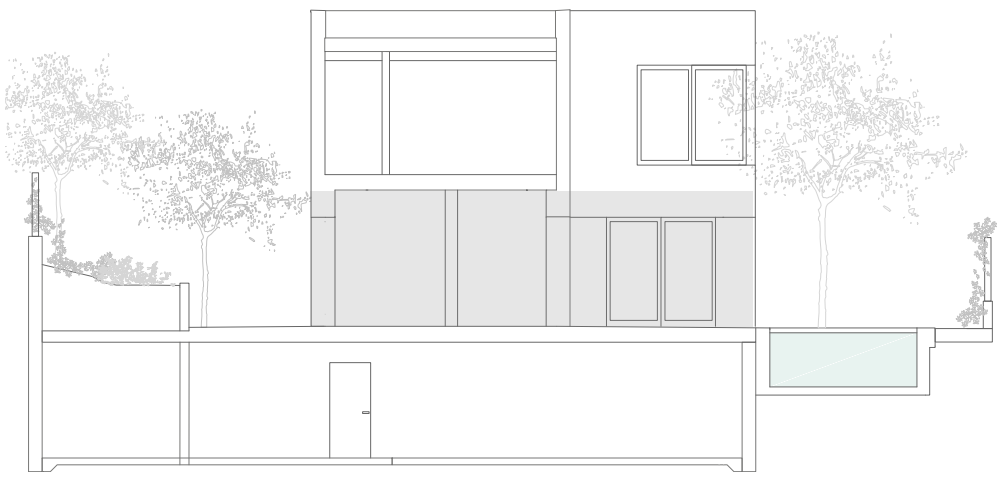
# villa llúcia

## GROUND FLOOR

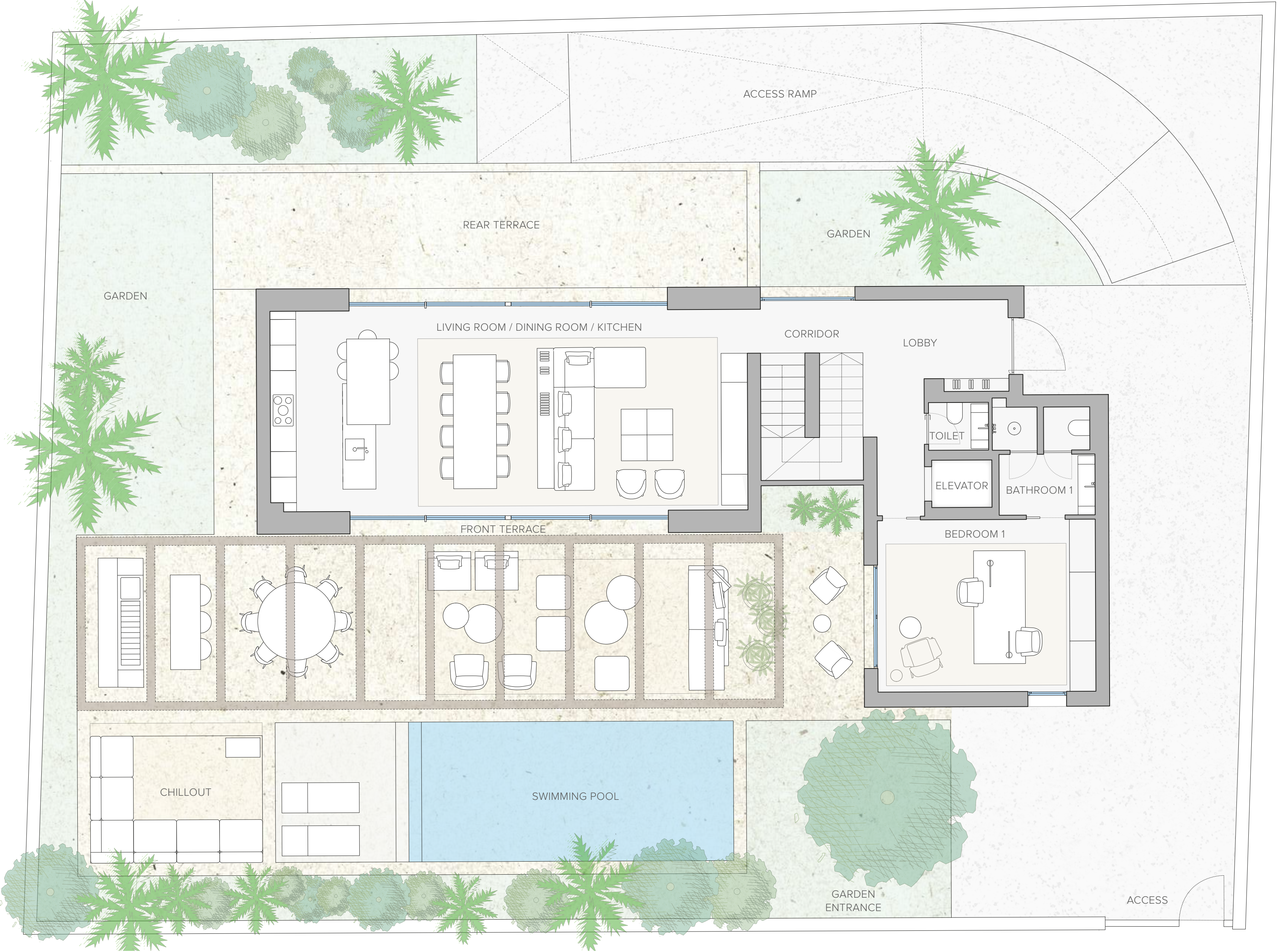
**Built area 129 m<sup>2</sup>**

**Usable area 99 m<sup>2</sup>**

Entrance lobby + corridor	14 m <sup>2</sup>
Living room / dining room / kitchen	57 m <sup>2</sup>
Bedroom 1	20 m <sup>2</sup>
Bathroom 1	8 m <sup>2</sup>
Guest toilet	2 m <sup>2</sup>
<b>Outdoor area 425 m<sup>2</sup></b>	
Garden	144 m <sup>2</sup>
Front terrace	75 m <sup>2</sup>
Rear terrace	34 m <sup>2</sup>
Outdoor lounge	13 m <sup>2</sup>
Swimming pool	35 m <sup>2</sup>



C. RAMÓN DE DALMASES





# villa llúcia

## FIRST FLOOR

<b>Built area</b>	<b>113 m<sup>2</sup></b>
<b>Usable area</b>	<b>81 m<sup>2</sup></b>
Bedroom 2	18 m <sup>2</sup>
Bathroom 2	9 m <sup>2</sup>
Bedroom 3	12 m <sup>2</sup>
Bathroom 3	6 m
Bedroom 4	16 m <sup>2</sup>
Corridor	19 m <sup>2</sup>



C. RAMÓN DE DALMASES

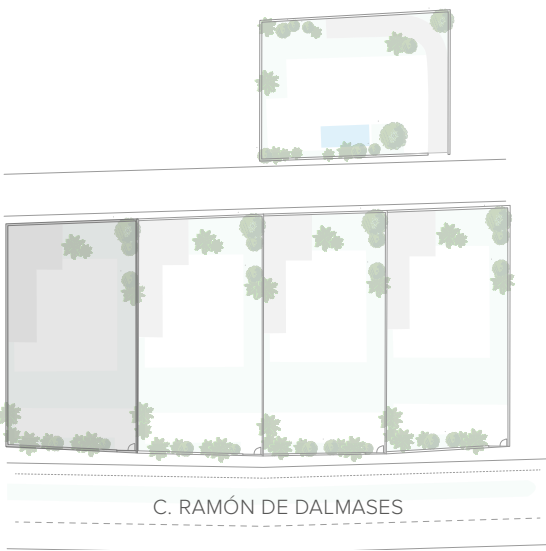
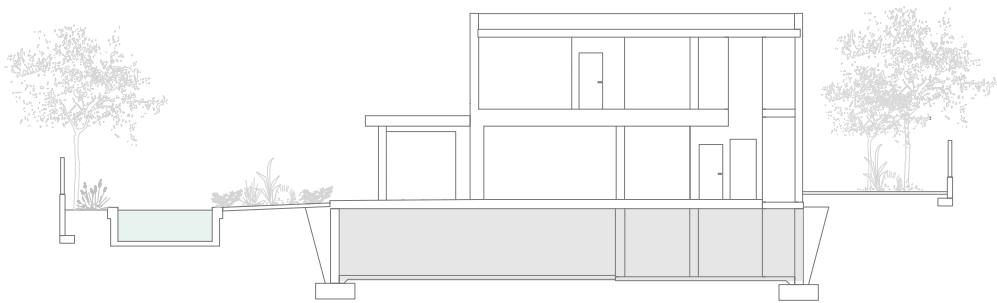




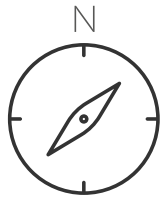
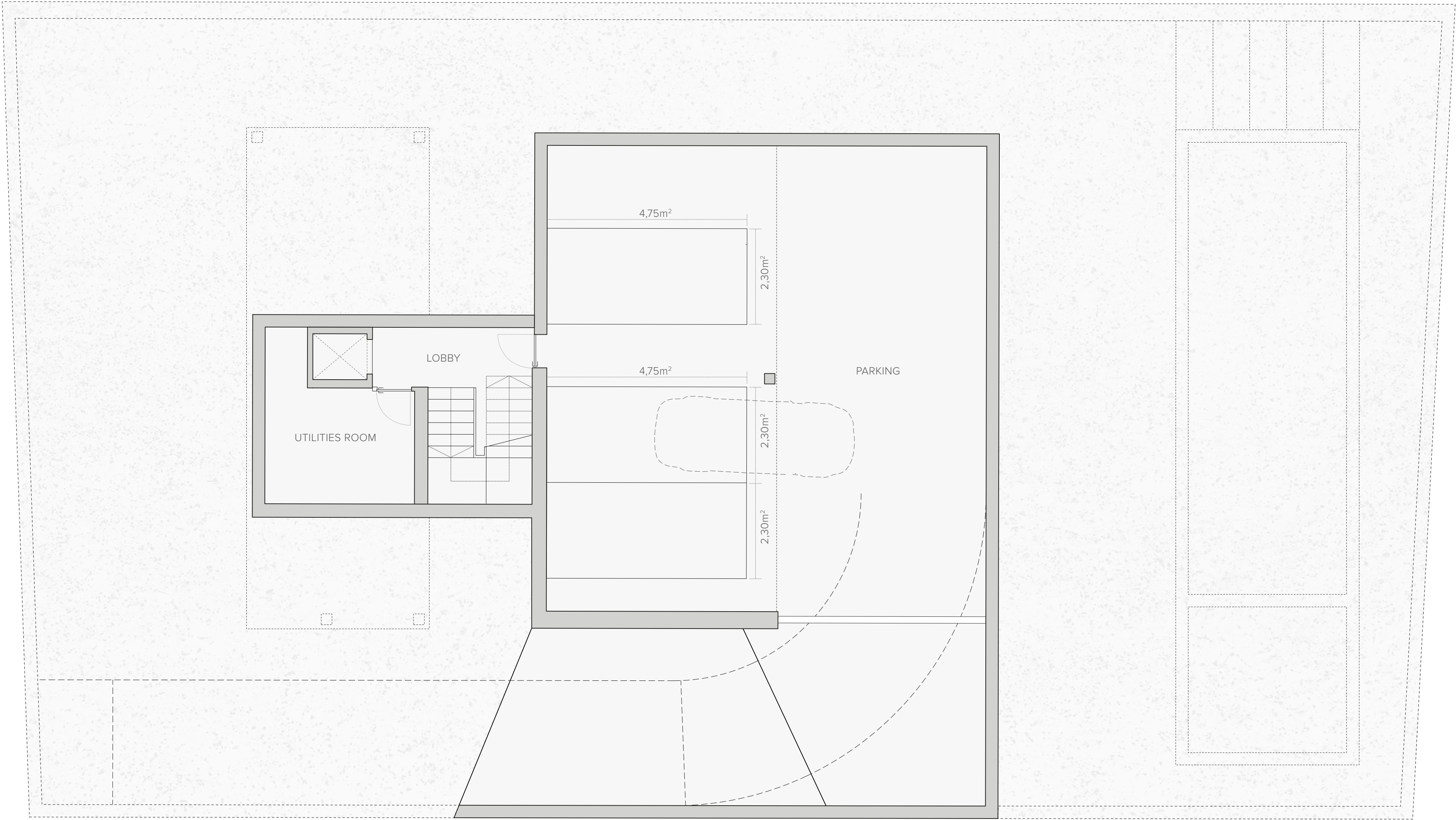
# villa ponent

## BASEMENT

<b>Built area</b>	<b>192 m<sup>2</sup></b>
<b>Usable area</b>	<b>136 m<sup>2</sup></b>
Parking	120 m <sup>2</sup>
Entrance lobby	6 m <sup>2</sup>
Utilities room	10 m <sup>2</sup>



C. RAMÓN DE DALMASES



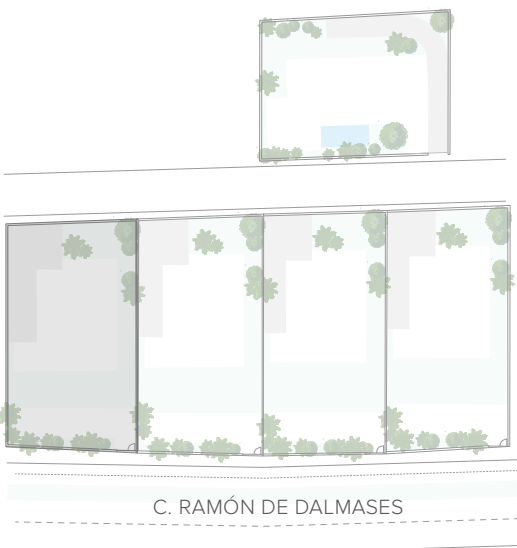
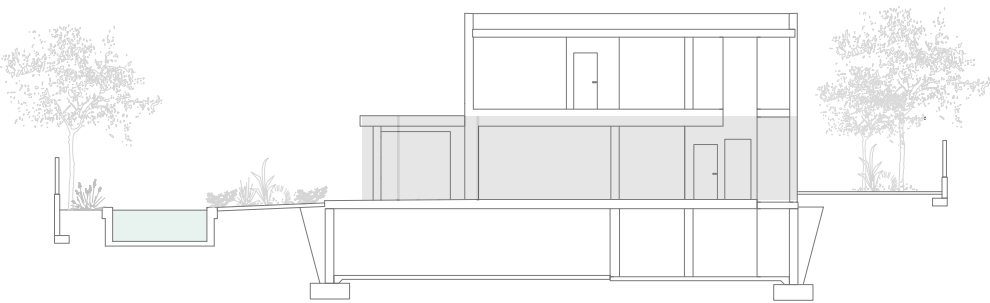
The floor plans included in this document are non-contractual and non-binding, serving solely for illustrative and informational purposes. These plans do not necessarily reflect the final architecture or interior design, as they are based on an initial project that may be subject to modifications in the technical designs for technical or legal reasons.



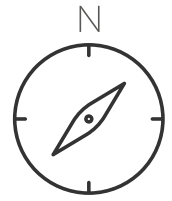
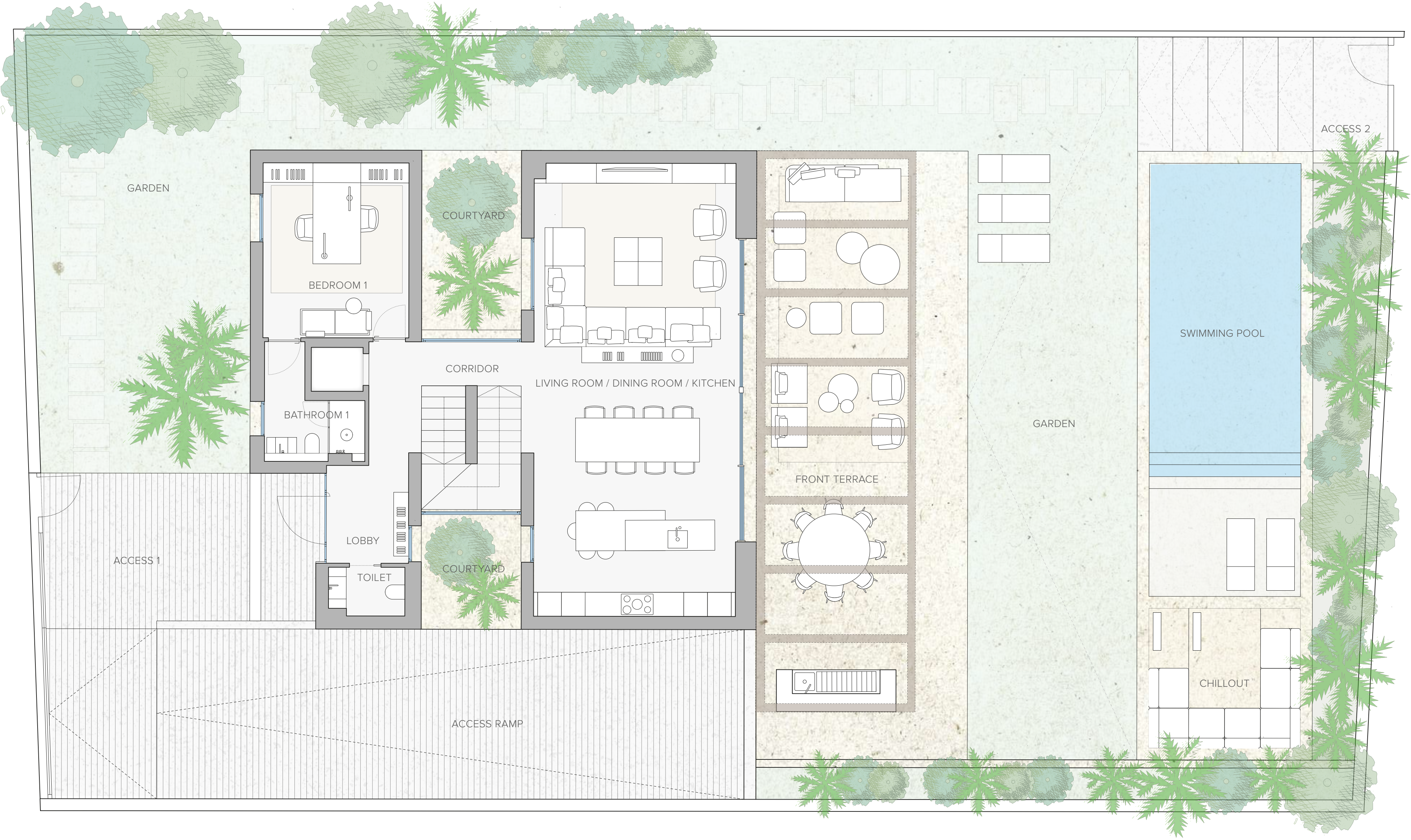
# villa ponent

## GROUND FLOOR

<b>Built area</b>	<b>128 m<sup>2</sup></b>
<b>Usable area</b>	<b>96 m<sup>2</sup></b>
Entrance lobby + corridor	12 m <sup>2</sup>
Living room / dining room / kitchen	60 m <sup>2</sup>
Bedroom 1	11 m <sup>2</sup>
Bathroom 1	6 m <sup>2</sup>
Guest toilet	3 m <sup>2</sup>
<b>Outdoor area</b>	<b>479 m<sup>2</sup></b>
Garden	229 m <sup>2</sup>
Front terrace	79 m <sup>2</sup>
Courtyard	17 m <sup>2</sup>
Outdoor lounge	15 m <sup>2</sup>
Swimming pool	44 m <sup>2</sup>



C. RAMÓN DE DALMASES

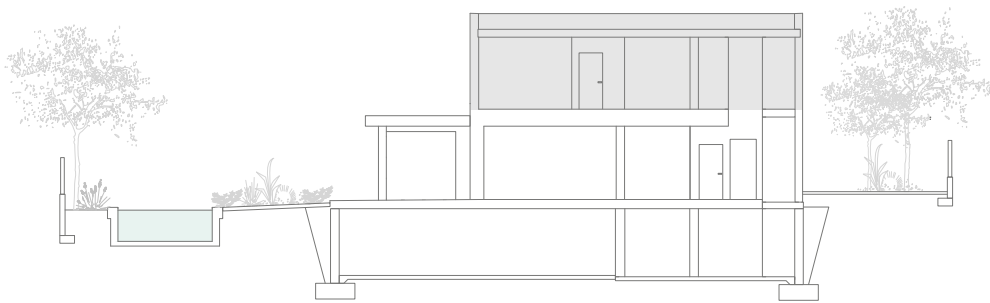




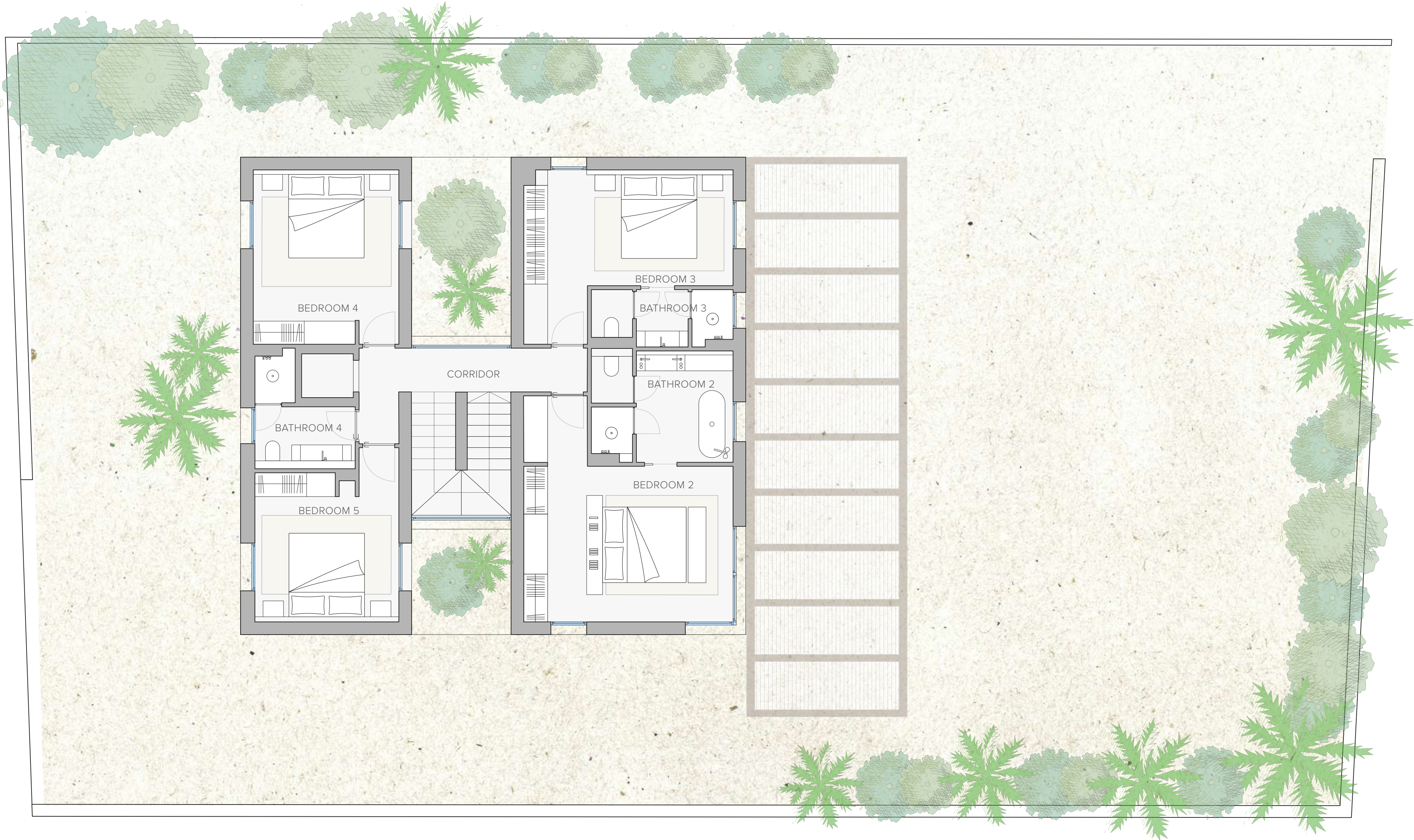
# villa ponent

## FIRST FLOOR

<b>Built area</b>	<b>135 m<sup>2</sup></b>
<b>Usable area</b>	<b>100 m<sup>2</sup></b>
Bedroom 2	17 m <sup>2</sup>
Bathroom 2	9 m <sup>2</sup>
Bedroom 3	17 m <sup>2</sup>
Bathroom 3	5 m <sup>2</sup>
Bedroom 4	16 m <sup>2</sup>
Bedroom 5	15 m <sup>2</sup>
Bathroom 4	5 m <sup>2</sup>
Corridor	8 m <sup>2</sup>



C. RAMÓN DE DALMASES

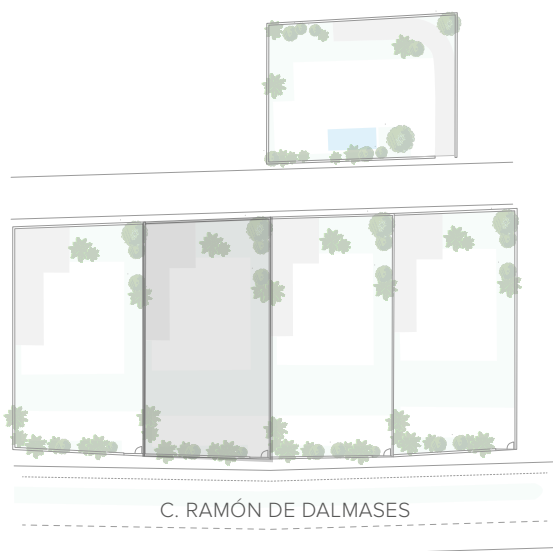
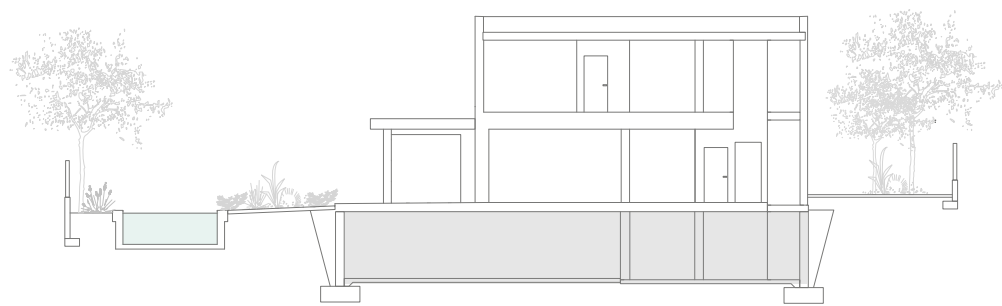




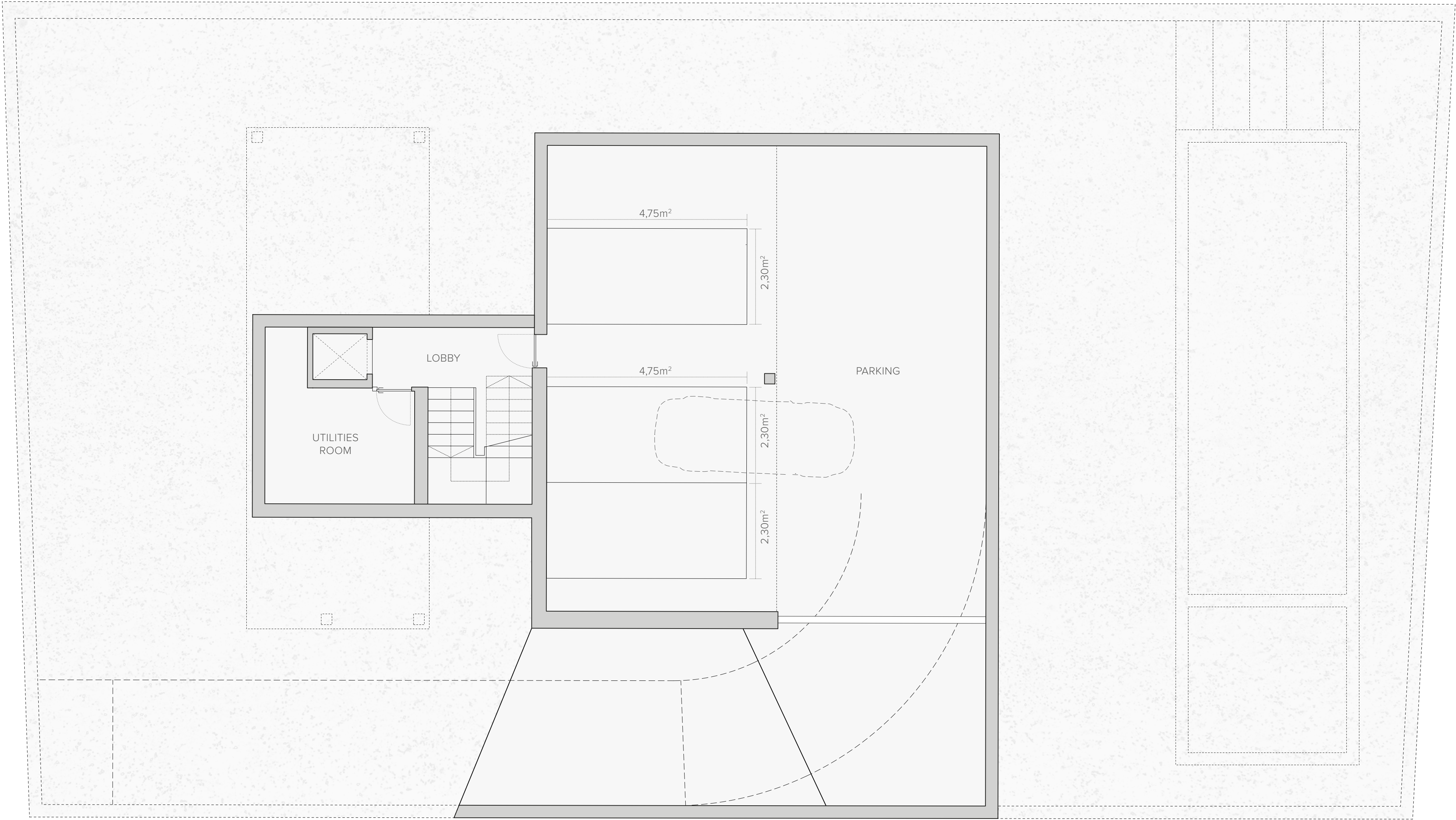
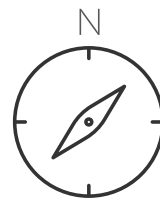
# villa claror

## BASEMENT

<b>Built area</b>	<b>192 m<sup>2</sup></b>
<b>Usable area</b>	<b>136 m<sup>2</sup></b>
Parking	120 m <sup>2</sup>
Entrance lobby	6 m <sup>2</sup>
Utilities room	10 m <sup>2</sup>



C. RAMÓN DE DALMASES



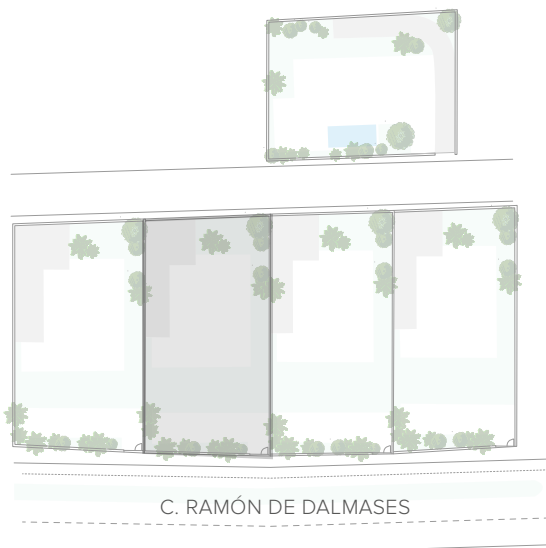
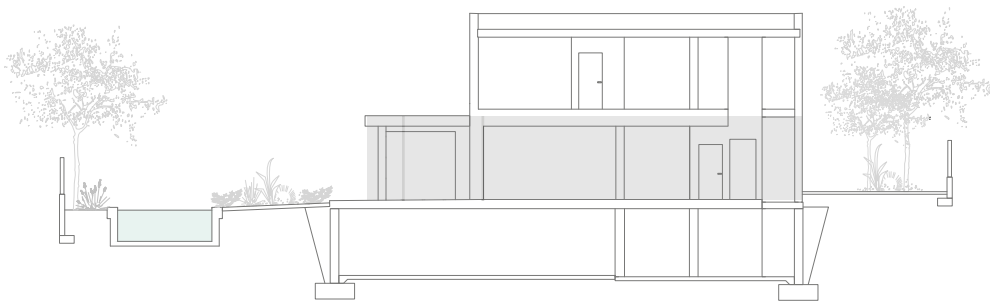
The floor plans included in this document are non-contractual and non-binding, serving solely for illustrative and informational purposes. These plans do not necessarily reflect the final architecture or interior design, as they are based on an initial project that may be subject to modifications in the technical designs for technical or legal reasons.



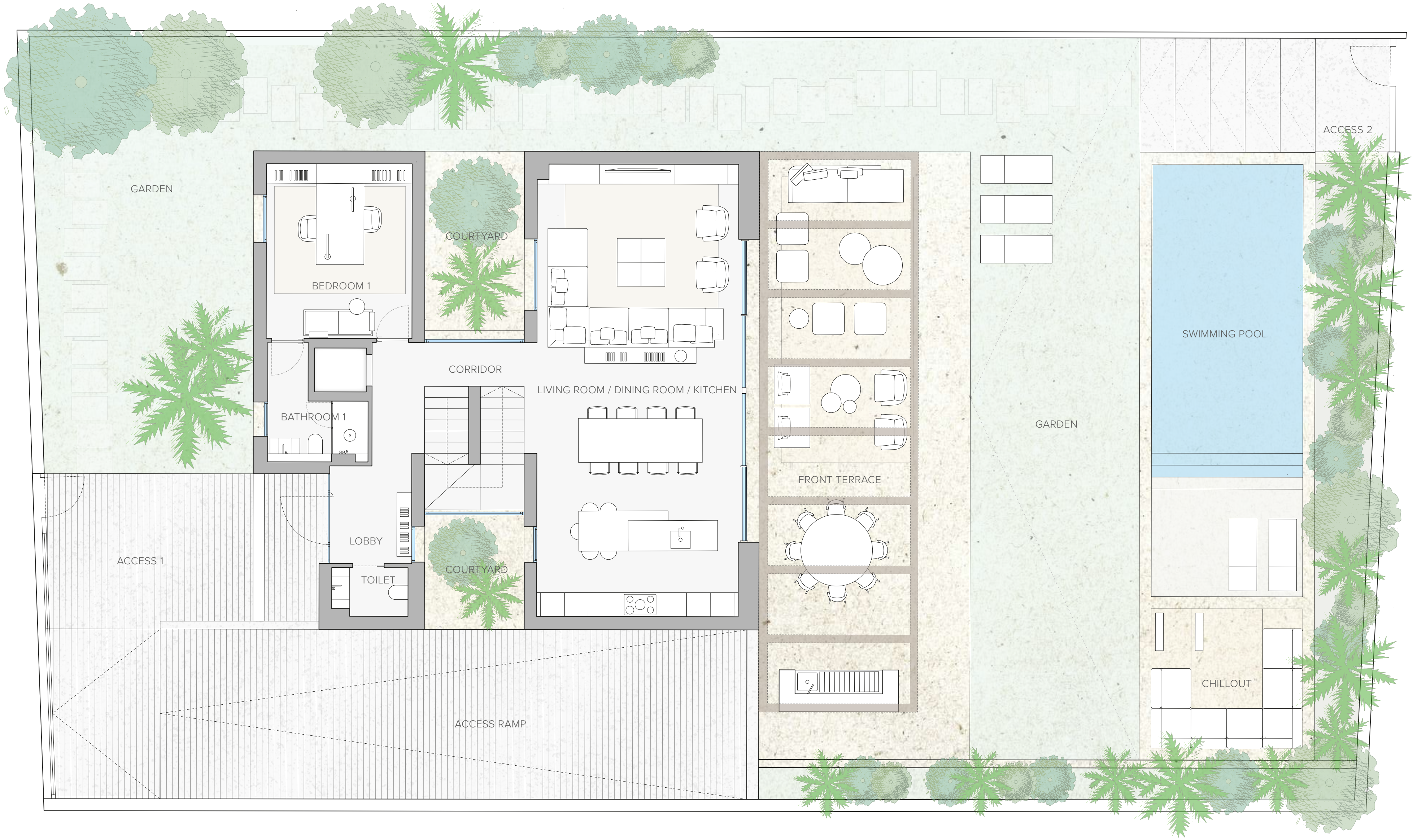
# villa claror

## GROUND FLOOR

<b>Built area</b>	<b>128 m<sup>2</sup></b>
<b>Usable area</b>	<b>96 m<sup>2</sup></b>
Entrance lobby + corridor	12 m <sup>2</sup>
Living room / dining room / kitchen	60 m <sup>2</sup>
Bedroom 1	11 m <sup>2</sup>
Bathroom 1	6 m <sup>2</sup>
Guest toilet	3 m <sup>2</sup>
<b>Outdoor area</b>	<b>479 m<sup>2</sup></b>
Garden	229 m <sup>2</sup>
Front terrace	79 m <sup>2</sup>
Courtyard	17 m <sup>2</sup>
Outdoor lounge	15 m <sup>2</sup>
Swimming pool	44 m <sup>2</sup>



C. RAMÓN DE DALMASES

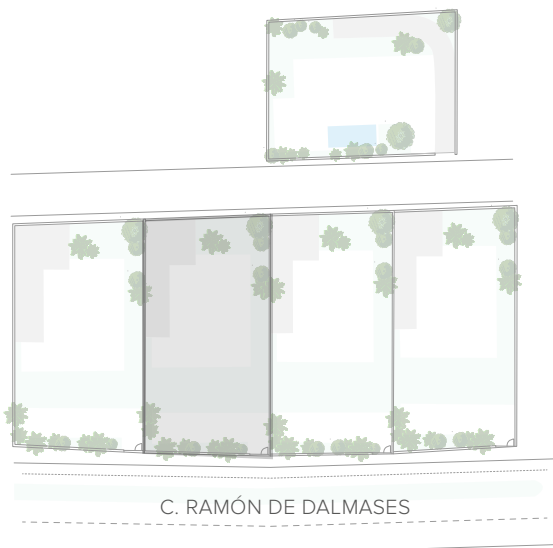
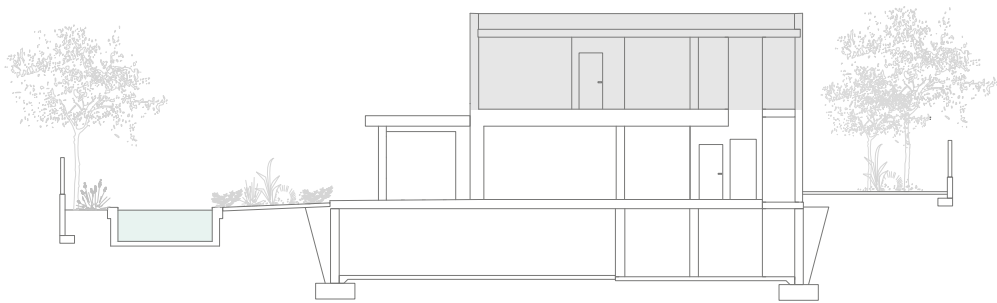




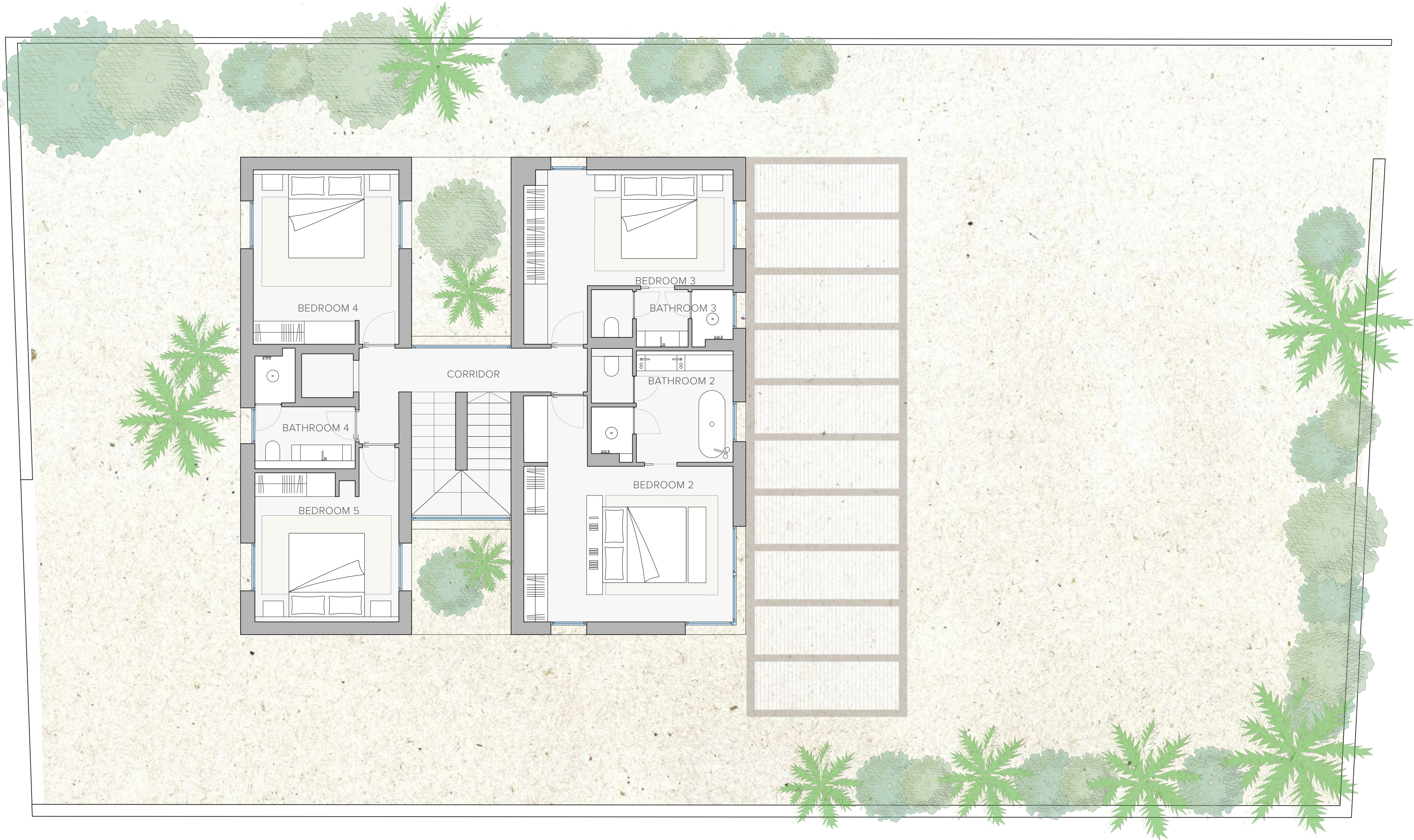
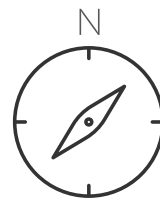
# villa claror

## FISRT FLOOR

<b>Built area</b>	<b>135 m<sup>2</sup></b>
<b>Usable area</b>	<b>100 m<sup>2</sup></b>
Bedroom 2	17 m <sup>2</sup>
Bathroom 2	9 m <sup>2</sup>
Bedroom 3	17 m <sup>2</sup>
Bathroom 3	5 m <sup>2</sup>
Bedroom 4	16 m <sup>2</sup>
Bedroom 5	15 m <sup>2</sup>
Bathroom 4	5 m <sup>2</sup>
Corridor	8 m <sup>2</sup>



C. RAMÓN DE DALMASES

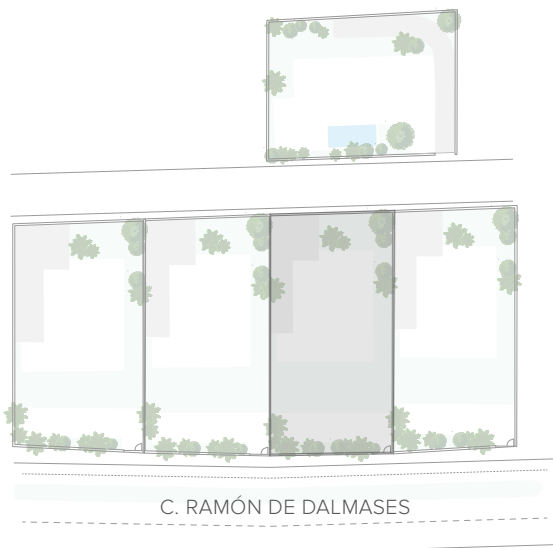
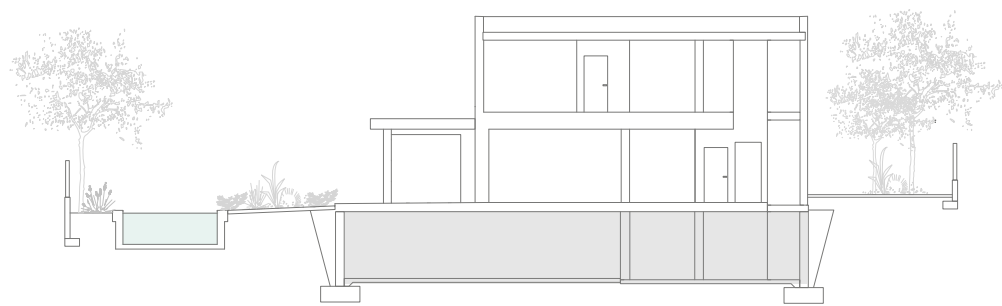




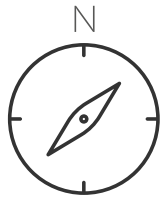
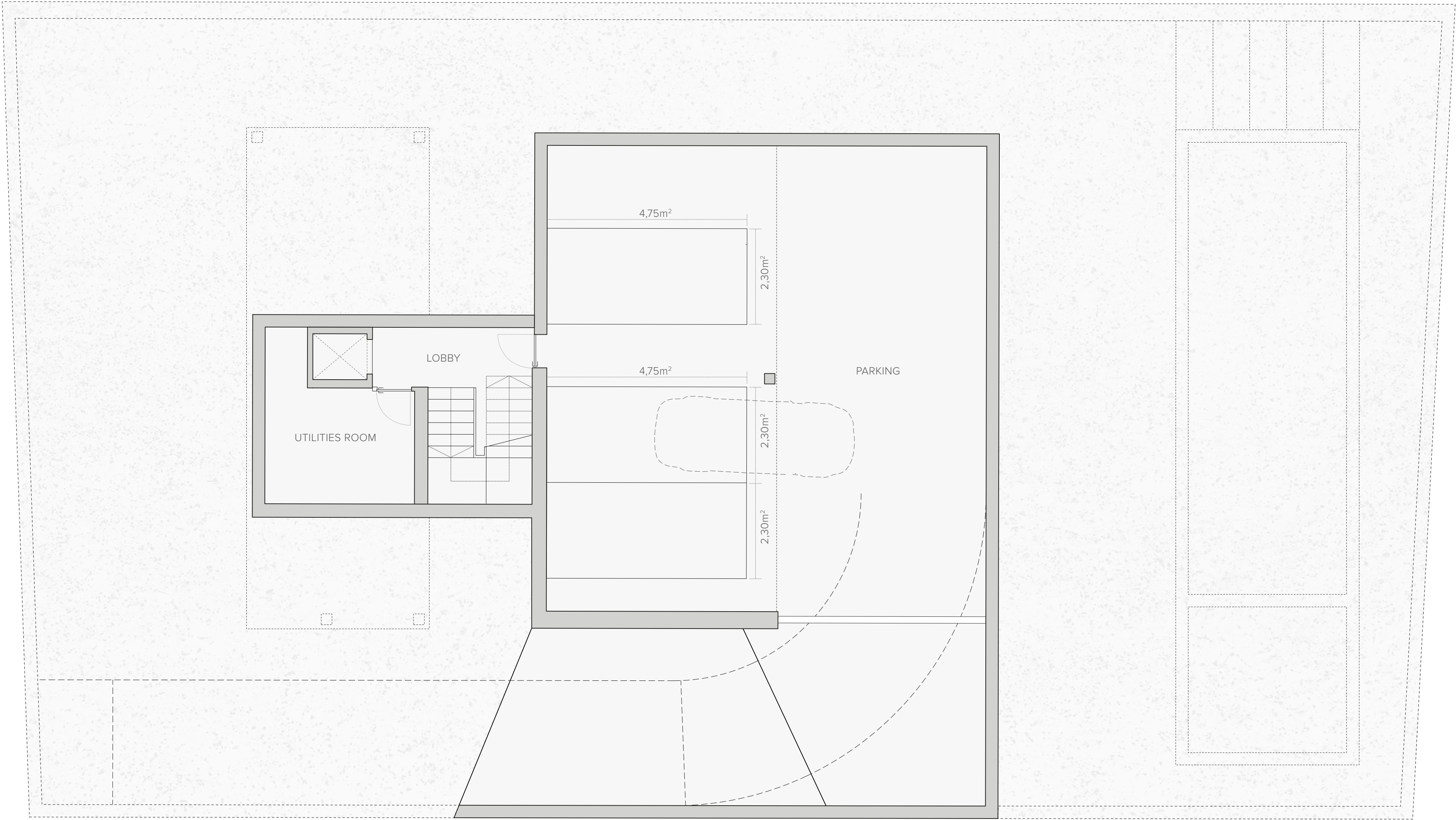
# villa migdía

## BASEMENT

<b>Built area</b>	<b>192 m²</b>
<b>Usable area</b>	<b>136 m²</b>
Parking	120 m²
Entrance lobby	6 m²
Utilities room	10 m²



C. RAMÓN DE DALMASES



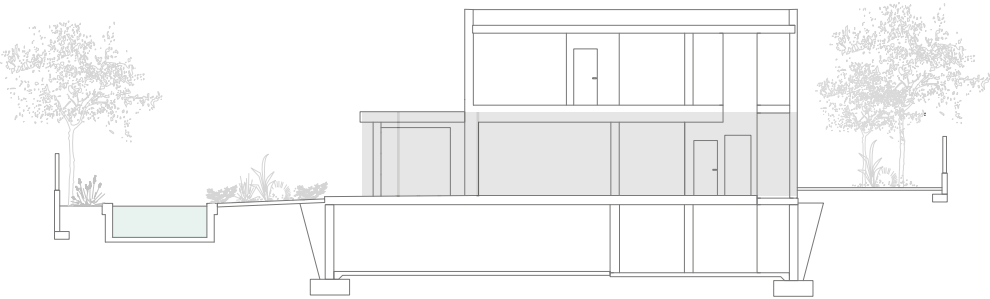
The floor plans included in this document are non-contractual and non-binding, serving solely for illustrative and informational purposes. These plans do not necessarily reflect the final architecture or interior design, as they are based on an initial project that may be subject to modifications in the technical designs for technical or legal reasons.



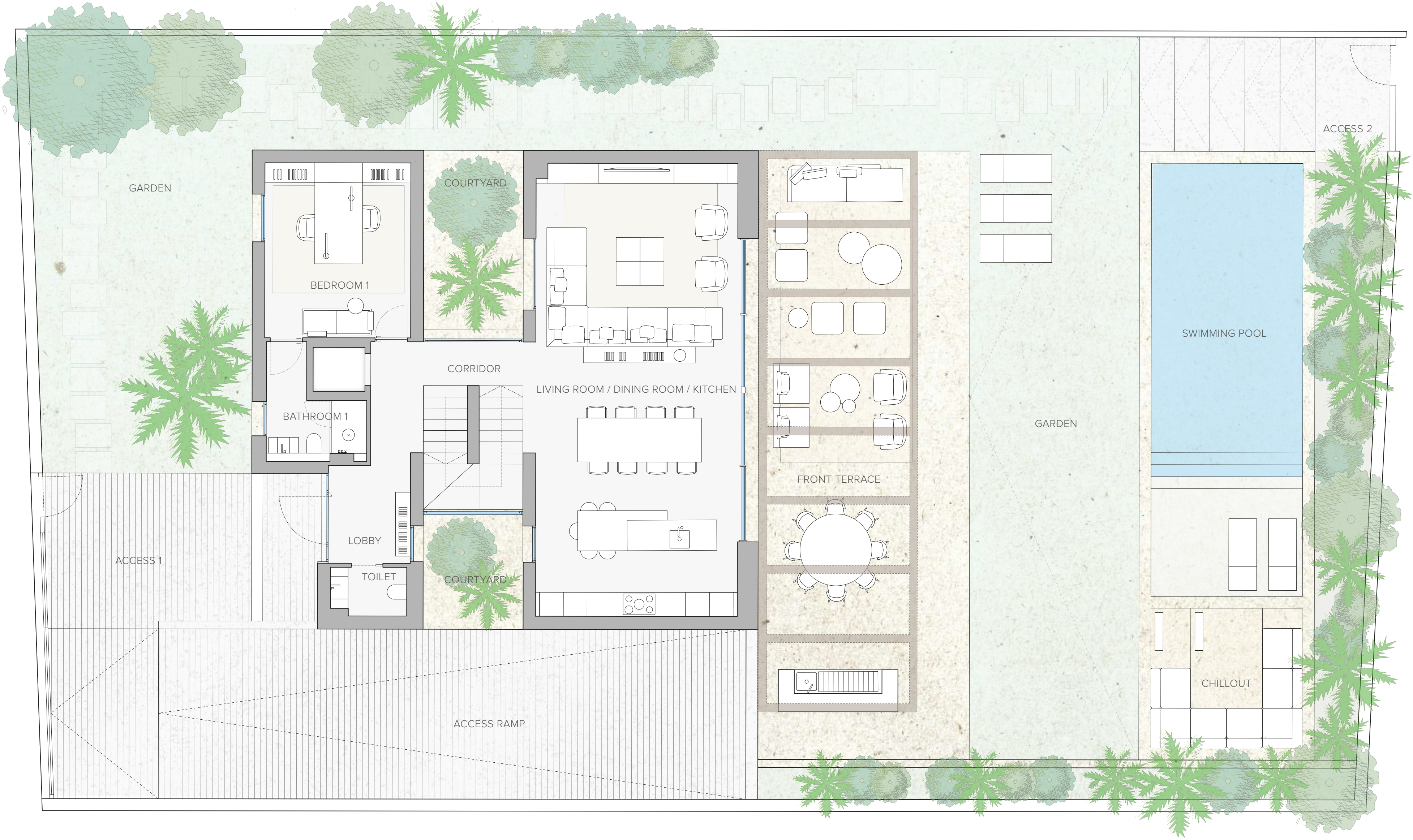
# villa migdía

## GROUND FLOOR

<b>Built area</b>	<b>128 m<sup>2</sup></b>
<b>Usable area</b>	<b>96 m<sup>2</sup></b>
Entrance lobby + corridor	12 m <sup>2</sup>
Living room / dining room / kitchen	60 m <sup>2</sup>
Bedroom 1	11 m <sup>2</sup>
Bathroom 1	6 m <sup>2</sup>
Guest toilet	3 m <sup>2</sup>
<b>Outdoor area</b>	<b>479 m<sup>2</sup></b>
Garden	229 m <sup>2</sup>
Front terrace	79 m <sup>2</sup>
Courtyard	17 m <sup>2</sup>
Outdoor lounge	15 m <sup>2</sup>
Swimming pool	44 m <sup>2</sup>



C. RAMÓN DE DALMASES

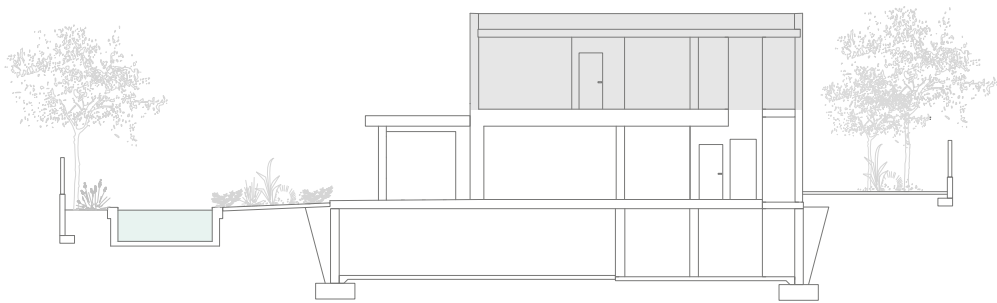




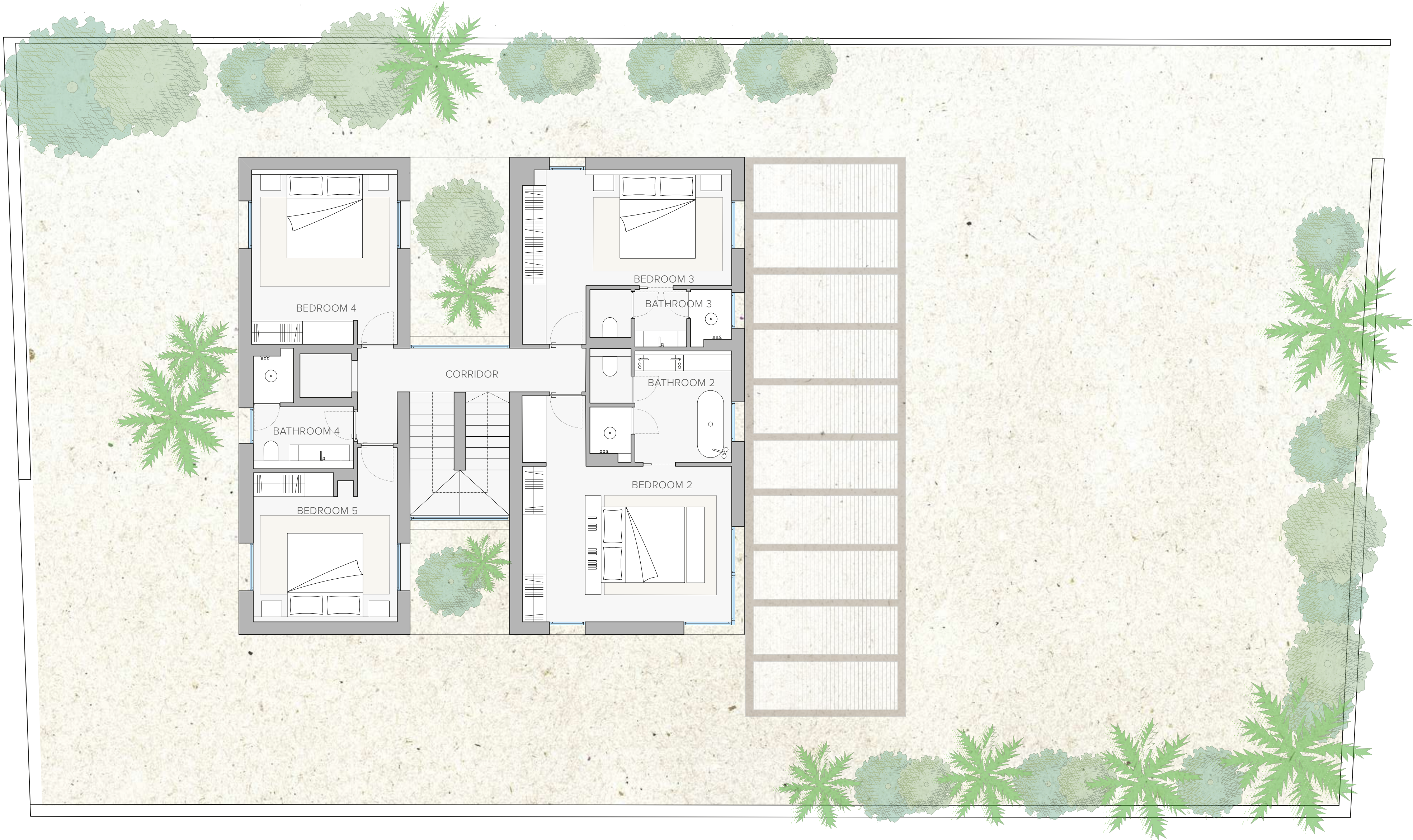
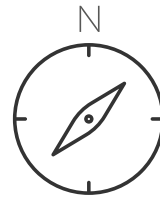
# villa migdía

## FIRST FLOOR

Superficie construidas	135 m <sup>2</sup>
Usable area	100 m <sup>2</sup>
Bedroom 2	17 m <sup>2</sup>
Bathroom 2	9 m <sup>2</sup>
Bedroom 3	17 m <sup>2</sup>
Bathroom 3	5 m <sup>2</sup>
Bedroom 4	16 m <sup>2</sup>
Bedroom 5	15 m <sup>2</sup>
Bathroom 4	5 m <sup>2</sup>
Corridor	8 m <sup>2</sup>



C. RAMÓN DE DALMASES

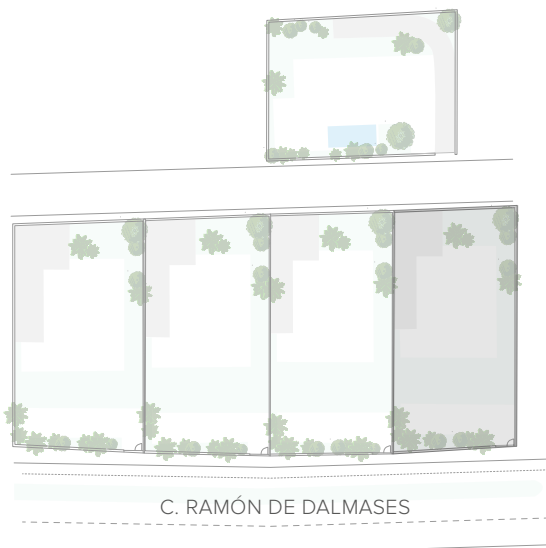
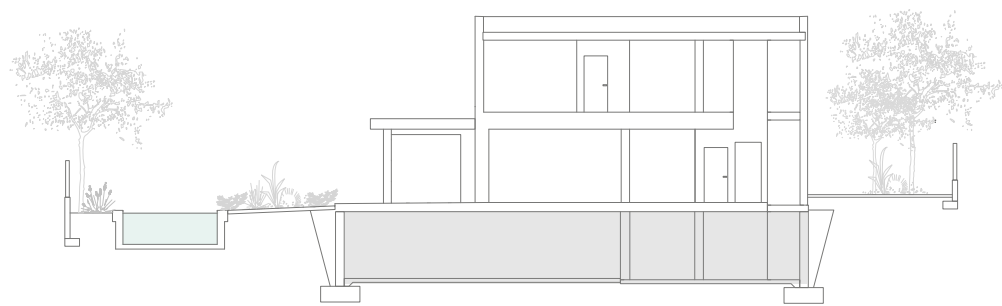




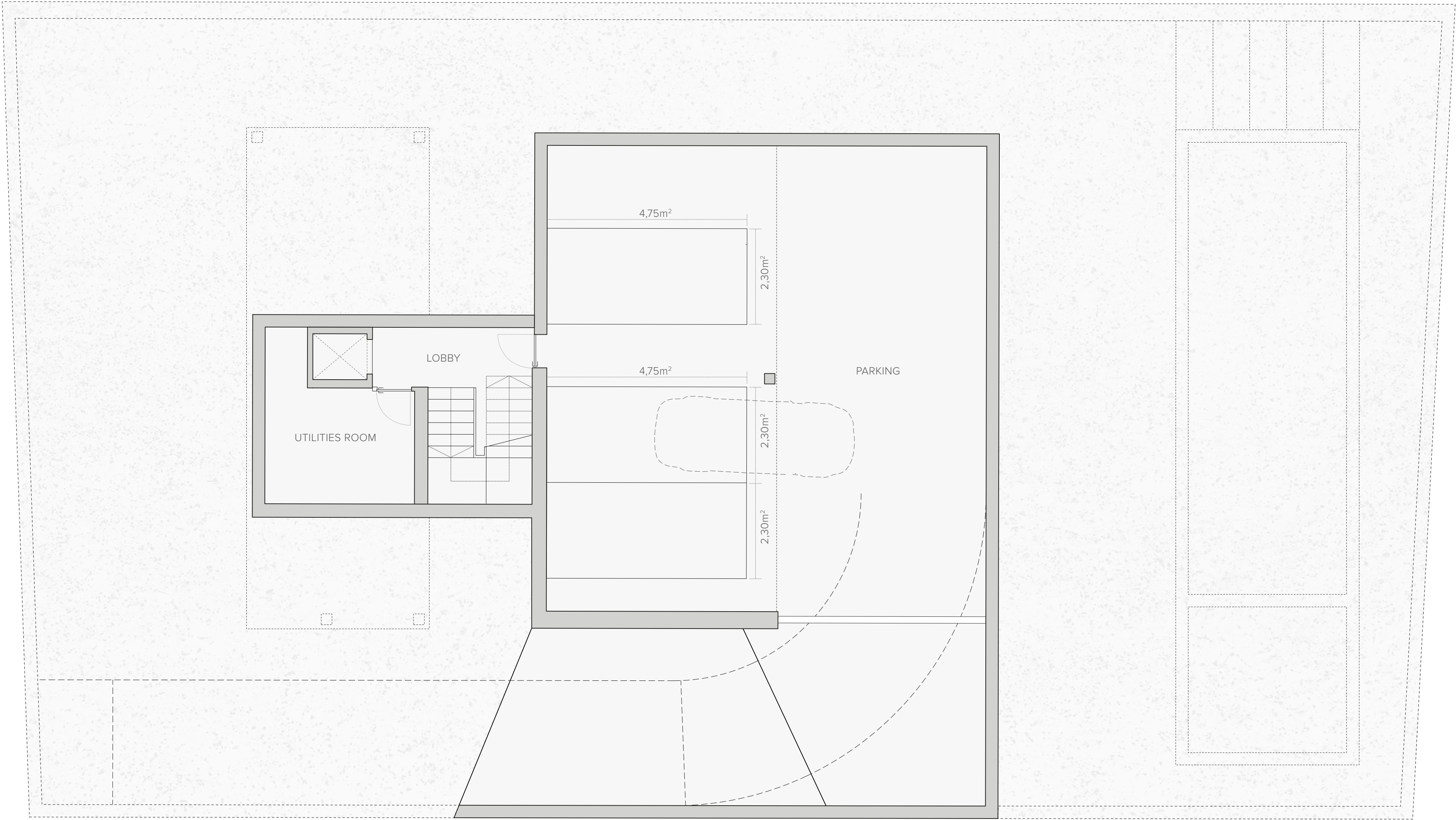
# villa alba

## BASEMENT

<b>Built area</b>	<b>192 m<sup>2</sup></b>
<b>Usable area</b>	<b>136 m<sup>2</sup></b>
Parking	120 m <sup>2</sup>
Entrance lobby	6 m <sup>2</sup>
Utilities room	10 m <sup>2</sup>



C. RAMÓN DE DALMASES



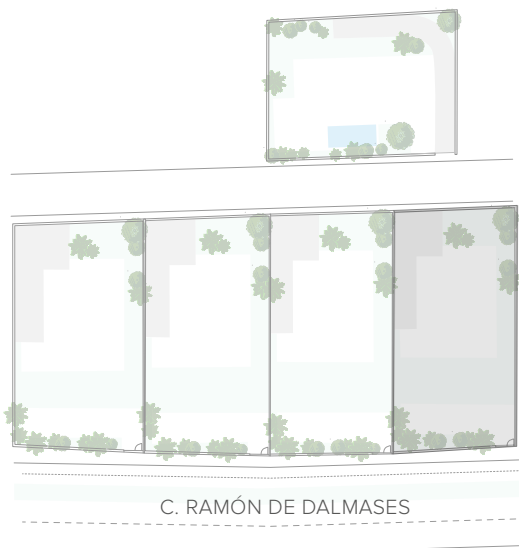
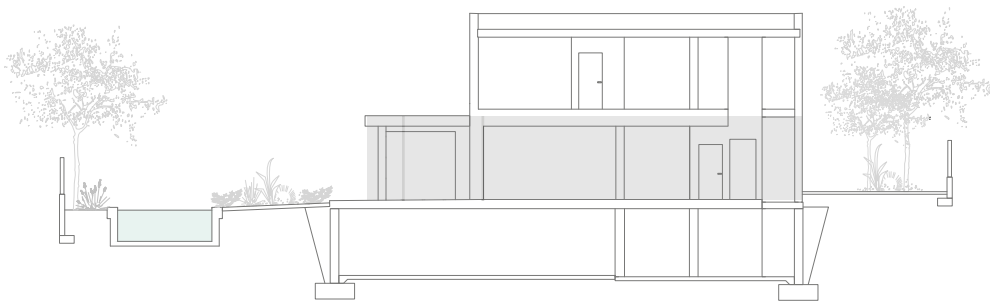
The floor plans included in this document are non-contractual and non-binding, serving solely for illustrative and informational purposes. These plans do not necessarily reflect the final architecture or interior design, as they are based on an initial project that may be subject to modifications in the technical designs for technical or legal reasons.



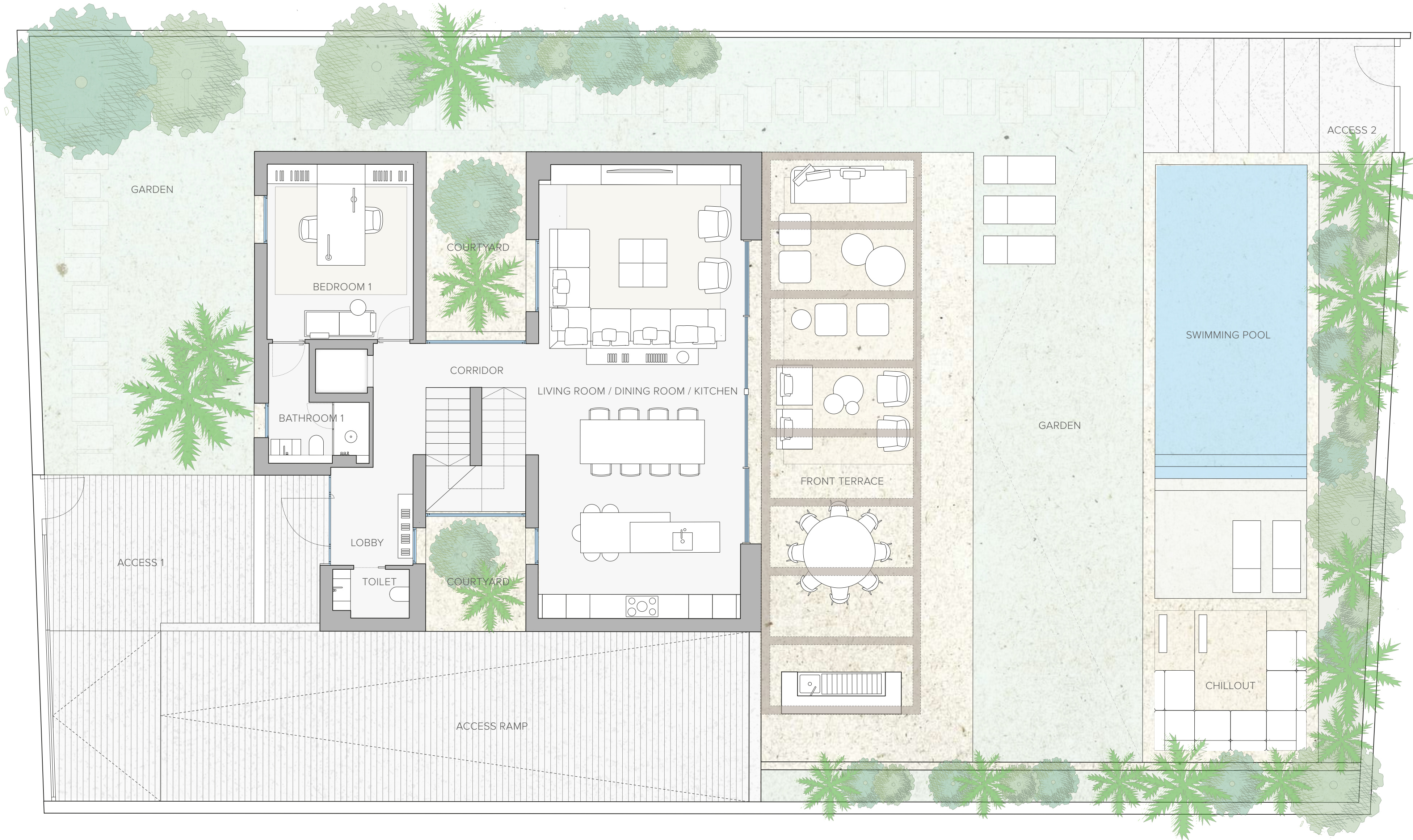
# villa alba

## GROUND FLOOR

<b>Built area</b>	<b>128 m<sup>2</sup></b>
<b>Usable area</b>	<b>96 m<sup>2</sup></b>
Entrance lobby + corridor	12 m <sup>2</sup>
Living room / dining room / kitchen	60 m <sup>2</sup>
Bedroom 1	11 m <sup>2</sup>
Bathroom 1	6 m <sup>2</sup>
Guest toilet	3 m <sup>2</sup>
<b>Outdoor area</b>	<b>479 m<sup>2</sup></b>
Garden	229 m <sup>2</sup>
Front terrace	79 m <sup>2</sup>
Courtyard	17 m <sup>2</sup>
Outdoor lounge	15 m <sup>2</sup>
Swimming pool	44 m <sup>2</sup>



C. RAMÓN DE DALMASES

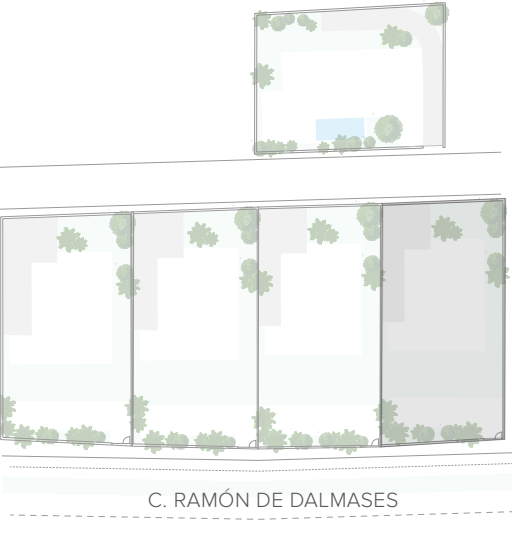
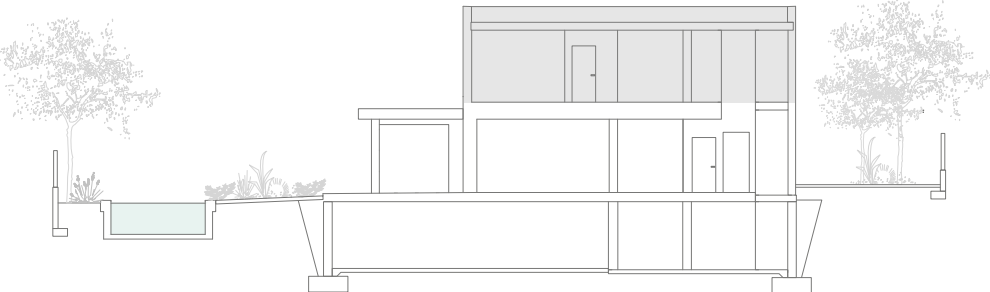
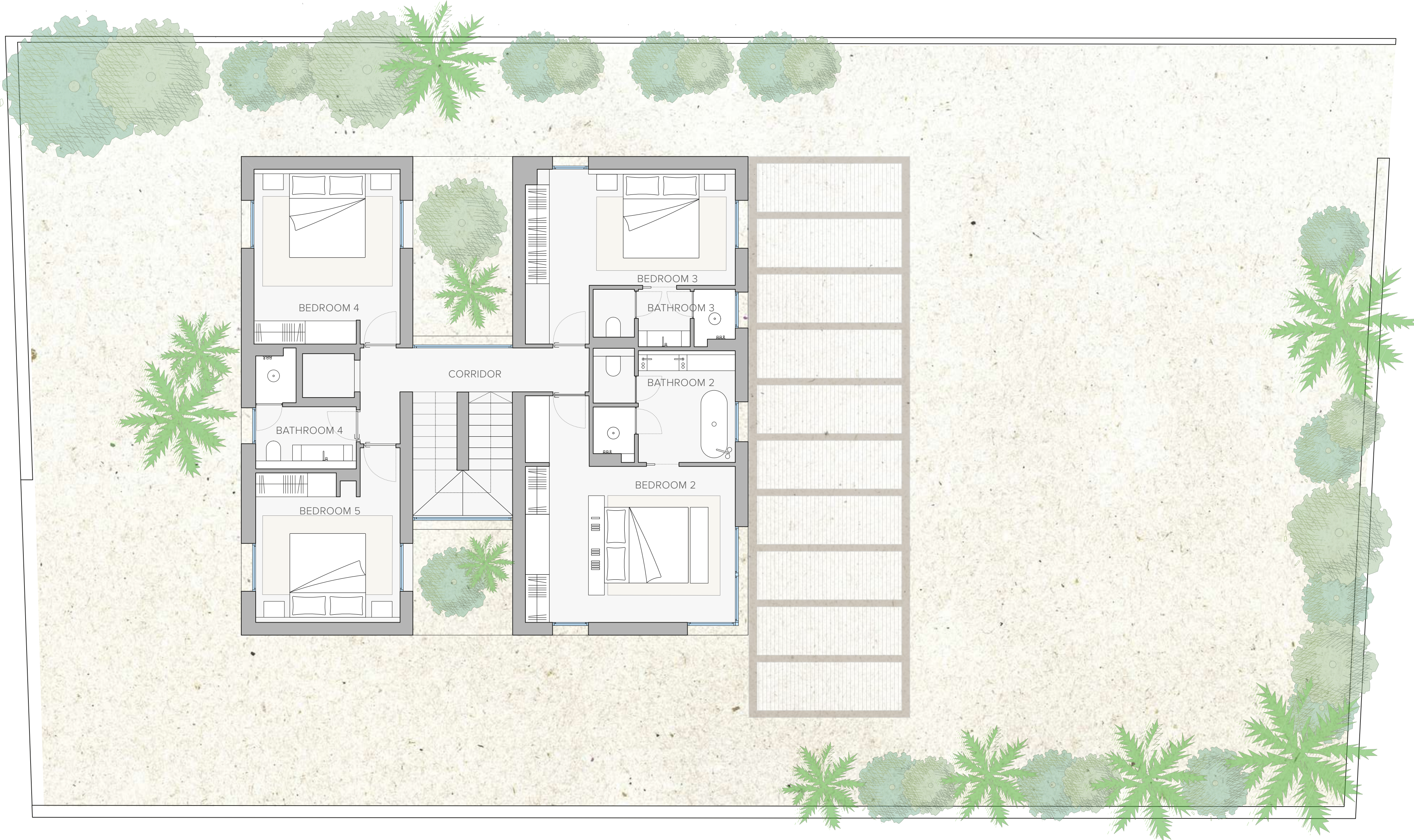




# villa alba

## FIRST FLOOR

Built area	135 m²
Usable area	100 m²
Bedroom 2	17 m²
Bathroom 2	9 m²
Bedroom 3	17 m²
Bathroom 3	5 m²
Bedroom 4	16 m²
Bedroom 5	15 m²
Bathroom 4	5 m²
Corridor	8 m²



C. RAMÓN DE DALMASES